

# RNAV (GPS) RWY 3

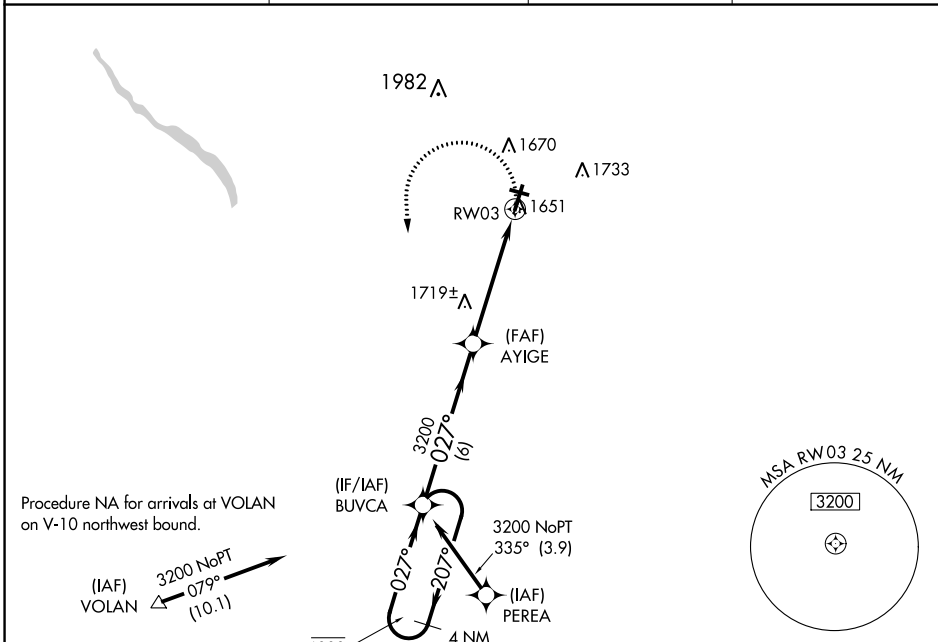
VENANGO RGNL (F'KL)

APP CRS <b>027°</b>	Rwy Idg <b>5200</b>
	TDZE <b>1539</b>
	Apt Elev <b>1540</b>

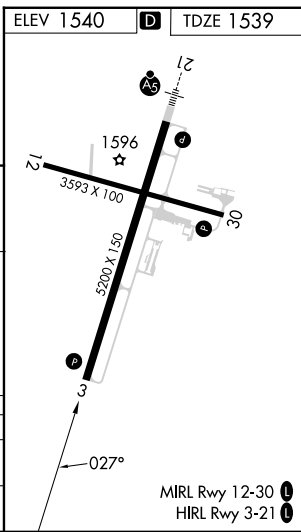
RNP APCH.  
 ⚠ Rwy 3 helicopter visibility reduction below ¼ SM NA.  
 ⚠ Circling Rwy 12 NA at night.

MISSED APPROACH: Climbing left turn to 3200 direct BUVCA and hold.

AWOS-3PT <b>118.175</b>	YOUNGSTOWN APP CON ★ <b>126.25 322.3</b>	CLNC DEL <b>126.25</b>	UNICOM <b>122.7</b> (CTAF) <b>1</b>
----------------------------	---	---------------------------	--



4 NM Holding Pattern	BUVCA	AYIGE	3200	BUVCA
6000 ← 207°	← 027° →	→ 027° →	→ 027° →	→ 027° →
3200		3200		
	6 NM	3.7 NM	1.3	
CATEGORY	A	B	C	D
LNVA MDA	1980-1	441 (500-1)	1980-1 ⅔	441 (500-1 ⅓)
CIRCLING	1980-1 440 (500-1)	2000-1 460 (500-1)	2040-1 ½ 500 (500-1 ½)	2100-2 560 (600-2)



NE-4, 31 OCT 2024 to 28 NOV 2024

NE-4, 31 OCT 2024 to 28 NOV 2024