

WILLIAMSBURG, VIRGINIA

RNAV (GPS) RWY 5

APCH CRS	Rwy Idg	5018
050°	TDZE	41
	Arpt Elev	41

AL-3214 [USA]

CAMP PEARY LNDG STRIP (KW94)

RNP APCH - GPS

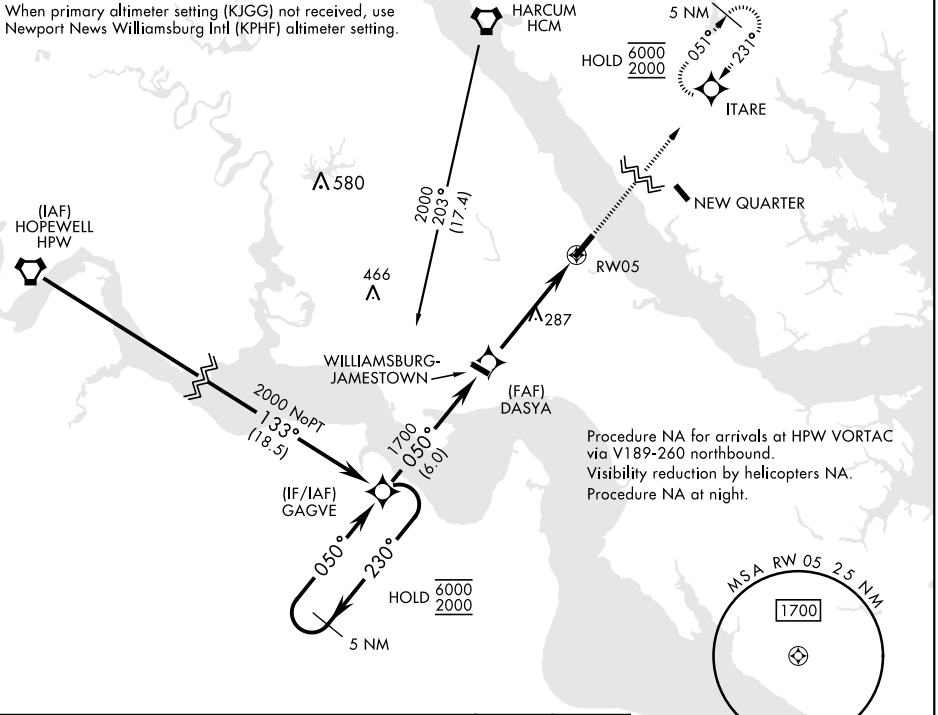
MISSED APPROACH: Climb to 2000 direct ITARE and hold.

Restricted airfield, PPR. Contact Camp Peary Ops prior to landing. Williamsburg Jamestown (KJGG) primary altimeter setting.

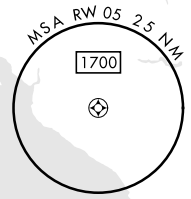
WILLIAMSBURG-JAMESTOWN AWOS-3
120.625

NORFOLK APP CON
125.7 335.625

When primary altimeter setting (KJGG) not received, use Newport News Williamsburg Intl (KPHF) altimeter setting.

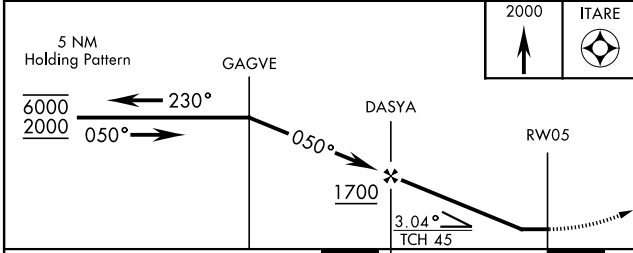


Procedure NA for arrivals at HPW VORTAC via V189-260 northbound.
Visibility reduction by helicopters NA.
Procedure NA at night.



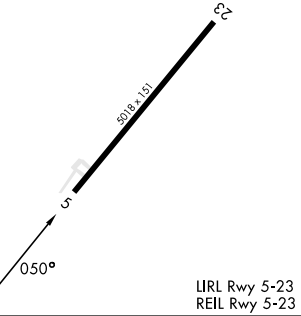
NE-3, 03 OCT 2024 to 31 OCT 2024

NE-3, 03 OCT 2024 to 31 OCT 2024



ELEV 41	TDZE 41
---------	---------

CATEGORY	A	B	C	D
LNVA MDA	600-1	559 (600-1)	600-1 5/8	559 (600-1 1/4)
CIRCLING	600-1	620-1	620-1 5/8	760-2 1/4
	559 (600-1)	579 (600-1)	579 (600-1 5/8)	719 (800-2 1/4)
NEWPORT NEWS / WILLIAMSBURG INTL ALTIMETER SETTING				
LNVA MDA	640-1	599 (600-1)	640-1 3/4	599 (600-1 3/4)
CIRCLING	640-1	599 (600-1)	640-1 3/4	780-2 1/4
			599 (600-1 3/4)	739 (800-2 1/4)



LIRL Rwy 5-23
REIL Rwy 5-23

WILLIAMSBURG, VIRGINIA
Amdt 1 02NOV23

37°18'N-76°38'W

CAMP PEARY LNDG STRIP (KW94)

RNAV (GPS) RWY 5