

APP CRS	Rwy Ldg	6013
041°	TDZE	10
	Apt Elev	10

RNAV (GPS) RWY 4

CHUUK INTL (TKK) (PTKK)

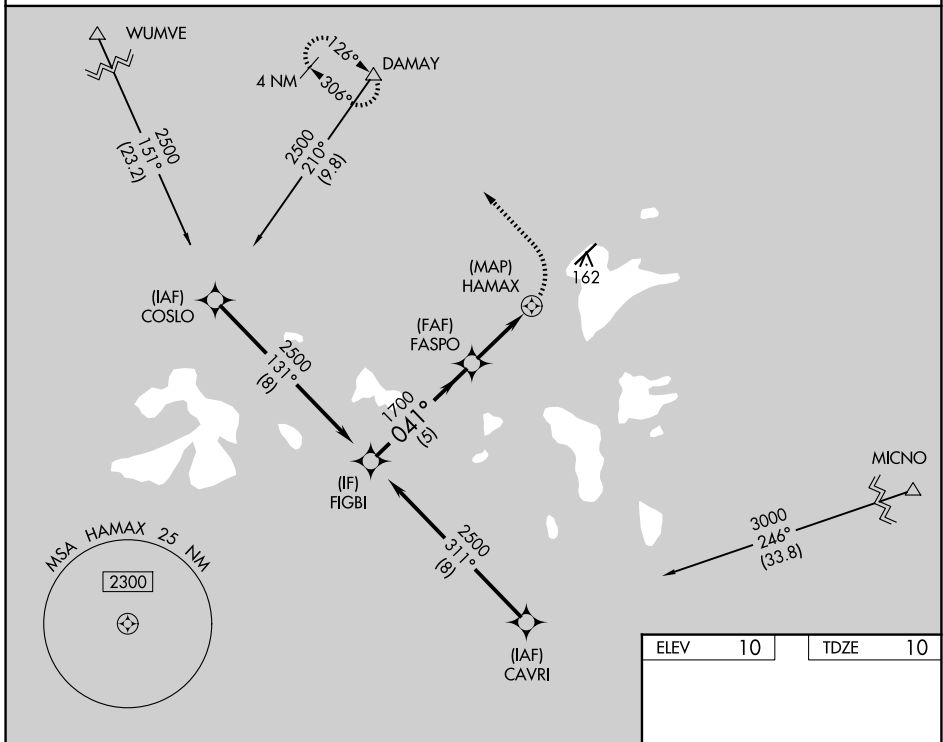
RNP APCH.

▽ Obtain local altimeter setting on CTAF; when not received, procedure NA.

▲ Circling NA southeast of Rwy 4-22.
No controlled airspace below 5500.

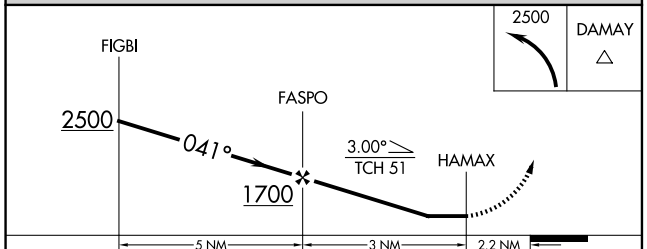
MISSED APPROACH: Climbing left turn to 2500 direct DAMAY and hold.
* Missed approach requires minimum climb of 375 feet per NM to 960.

TRUK RADIO
123.6 (CTAF)

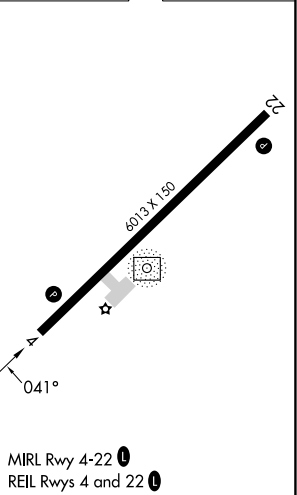


PAC, 19 MAR 2026 to 14 MAY 2026

PAC, 19 MAR 2026 to 14 MAY 2026



ELEV	10	TDZE	10
------	----	------	----



CATEGORY	A	B	C	D
LNAV MDA*		420-3	410 (500-3)	
LNAV MDA		620-3	610 (700-3)	
CIRCLING		620-3	610 (700-3)	