

NDB/DME TTK 375	APP CRS 054°	Rwy Ldg TDZE Apt Elev	6013 10 10
Chan 111 (116.4)			

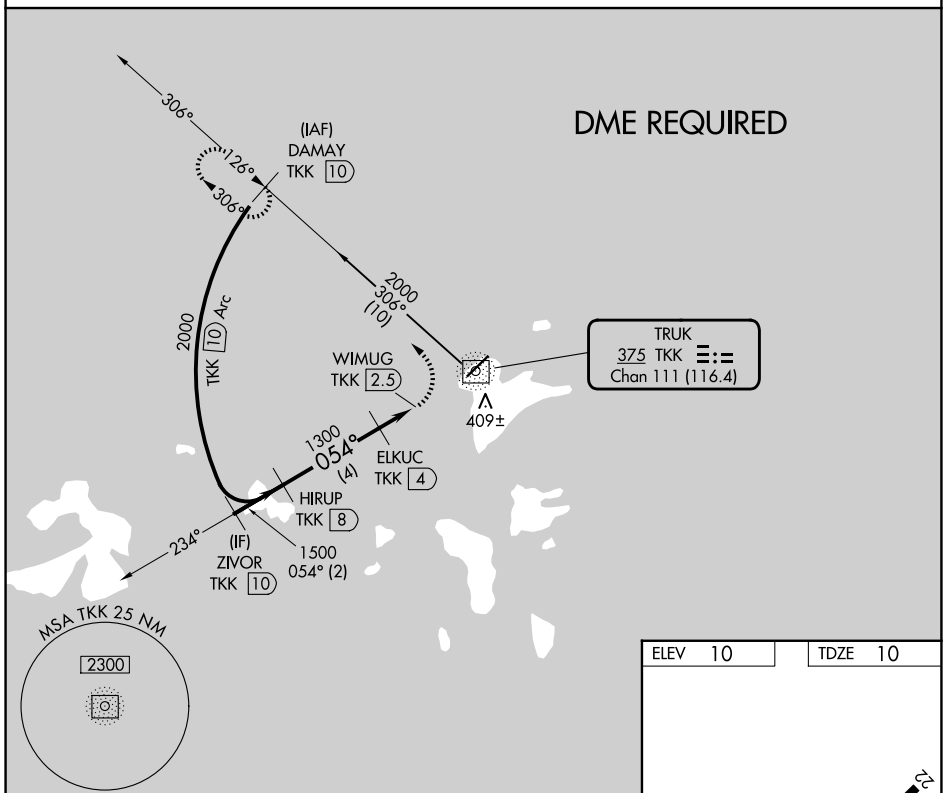
NDB RWY 4

CHUUK INTL (TKK) (PTKK)

- ▼ Obtain local altimeter setting on CTAF; when not received, procedure NA.
- ▲ Circling NA southeast of Rwy 4-22. DME required. No controlled airspace below 5500.

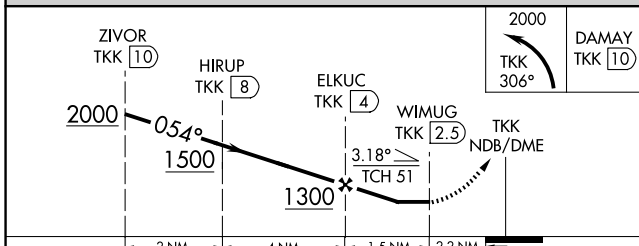
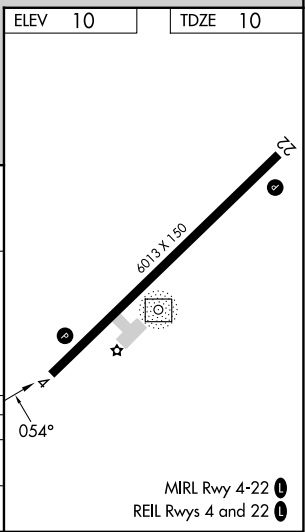
MISSED APPROACH: Climbing left turn to 2000 on TTK NDB/DME bearing 306° to DAMAY/TKK 10 DME and hold.

TRUK RADIO
123.6 (CTAF)



PAC, 19 MAR 2026 to 14 MAY 2026

PAC, 19 MAR 2026 to 14 MAY 2026



CATEGORY	A	B	C	D
S-4		720-2½	710 (800-2½)	
CIRCLING		720-2½	710 (800-2½)	