

NDB/DME	TKK	Rwy Ldg	6013
375	APP CRS	TDZE	10
Chan 111 (116.4)	221°	Apt Elev	10

NDB RWY 22

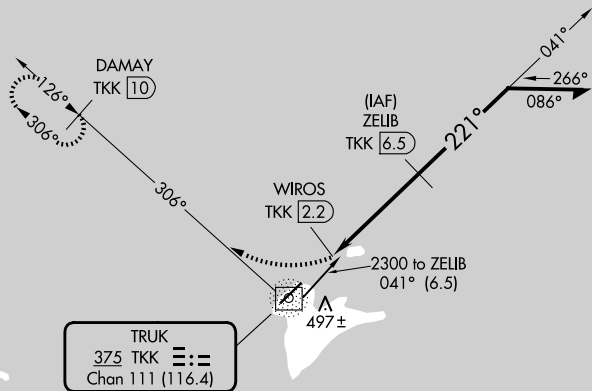
CHUUK INTL (TKK) (PTKK)

▽ Obtain local altimeter setting on CTAF; when not received, procedure NA.
▲ Circling NA southeast of Rwy 4-22. DME Required.
 No controlled airspace below 5500.

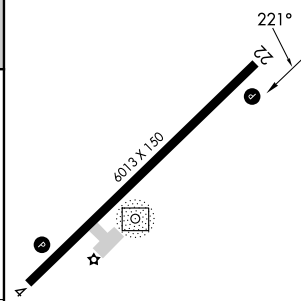
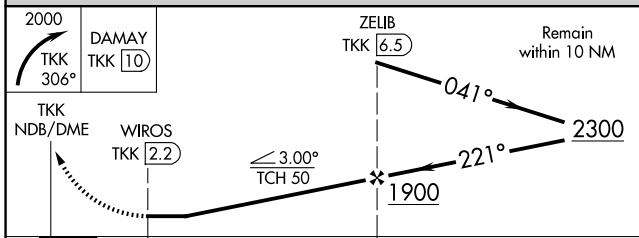
MISSED APPROACH: Climbing right turn to 2000 on BRG-306 from TKK NDB/DME to DAMAY/TKK 10 DME and hold.

TRUK RADIO
123.6 (CTAF)

DME REQUIRED



ELEV 10	TDZE 10
---------	---------



CATEGORY	A	B	C	D
S-22	800-1¾ 790 (800-1¾)		800-2½ 790 (800-2½)	
CIRCLING	800-1¾ 790 (800-1¾)		800-2½ 790 (800-2½)	

MIRL Rwy 4-22
 REIL Rws 4 and 22

PAC: 19 MAR 2026 to 14 MAY 2026

PAC: 19 MAR 2026 to 14 MAY 2026