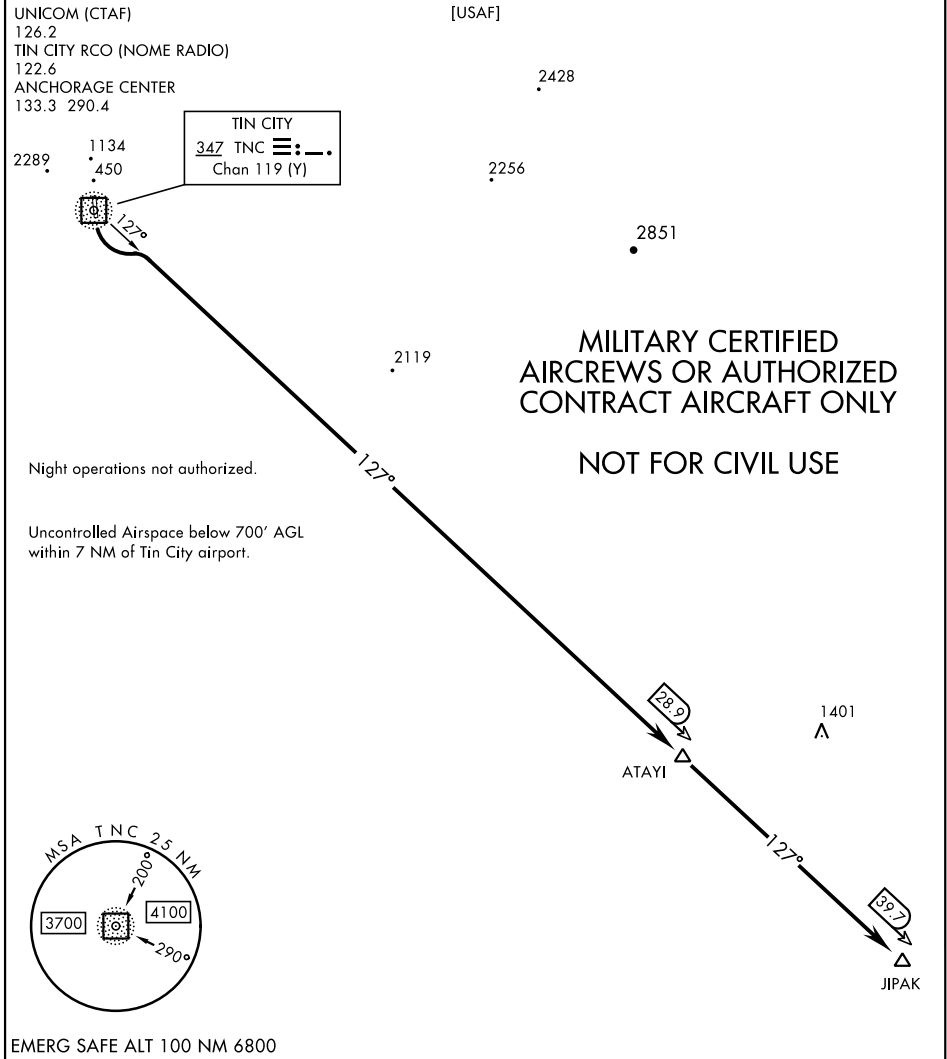


TIN CITY FIVE RWY 17 DEPARTURE (TNC5.JIPAK)

TIN CITY LRRS (PATC)
TIN CITY, ALASKA



AK, 31 OCT 2024 to 26 DEC 2024

AK, 31 OCT 2024 to 26 DEC 2024



DEPARTURE ROUTE DESCRIPTION

TAKEOFF RWY 17: Climbing left turn to 7000, intercept TNC 127° bearing to ATAYI, then direct JIPAK.

TAKEOFF RWY 35: NA

TIN CITY FIVE RWY 17 DEPARTURE (TNC5.JIPAK)

Orig 31OCT24

TIN CITY, ALASKA
TIN CITY LRRS (PATC)