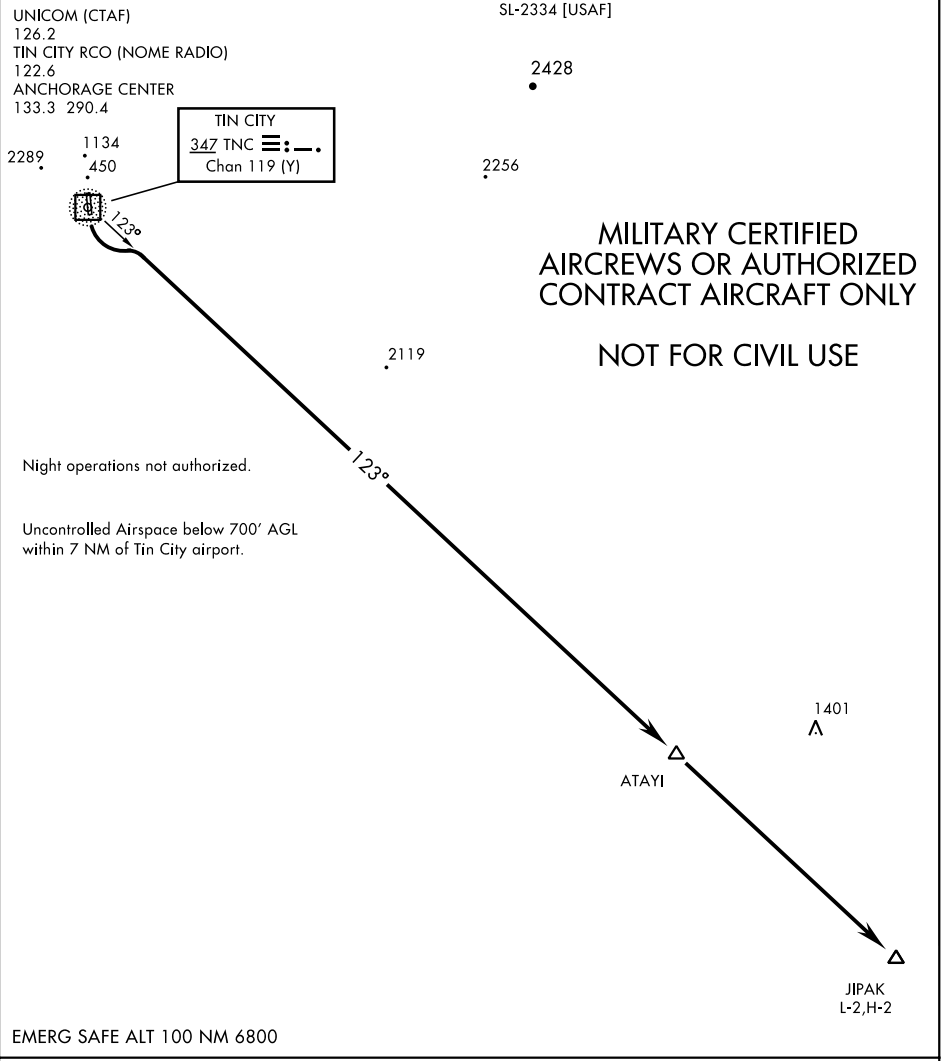


Orig 18312

TIN CITY FOUR RWY 16 DEPARTURE (TNC4•JIPAK)

TIN CITY LRRS (PATC)
TIN CITY, ALASKA



AK, 05 SEP 2024 to 31 OCT 2024

AK, 05 SEP 2024 to 31 OCT 2024



DEPARTURE ROUTE DESCRIPTION

TAKE-OFF RWY 16: Climbing left turn to 7000, intercept TNC 123° bearing to ATAYI, then direct JIPAK.

TAKE-OFF RWY 34: NA

TIN CITY FOUR RWY 16 DEPARTURE (TNC4•JIPAK)

TIN CITY, ALASKA
TIN CITY LRRS (PATC)