

RNAV (GPS) RWY 34

APCH CRS 345°	Rwy ldg 4702
	TDZE 273
	Arpt Elev 273

AL-2334 [USAF]

TIN CITY LRSS (PATC)

RNP APCH - GPS required.	MISSED APPROACH: Climb to 1500 then climbing right turn to 4000 direct JAGMA and hold.
<p>▼ Night operations not authorized</p> <p>* Circling not authorized W of runway 16/34</p>	

ANCHORAGE CENTER 133.3 290.4	TIN CITY RCO (NOME RADIO) 122.6	UNICOM 126.2 (CTAF)
--	---	-------------------------------

Uncontrolled airspace below 700' AGL within 7 NM of Tin City airport.
Circling visibility reduction by helicopters NA.

**MILITARY CERTIFIED
AIRCREW OR AUTHORIZED
CONTRACT AIRCRAFT ONLY
NOT FOR CIVIL USE**

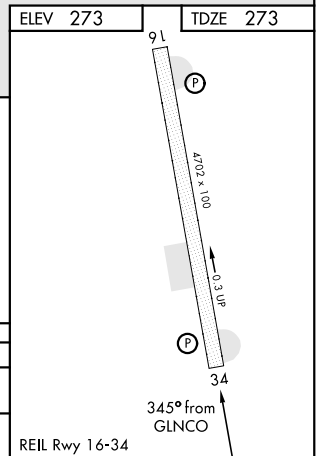
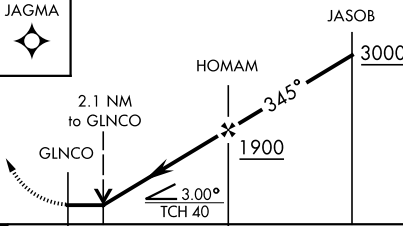
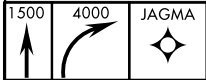
CAUTION:
2289' mountain 2 NM west of airport.



AK, 11 JUL 2024 to 05 SEP 2024

AK, 11 JUL 2024 to 05 SEP 2024

EMERG SAFE ALT 100 NM 7000



CATEGORY	A	B	C	D
LNAV MDA	1260-1¼ 987 (1000-1¼)	1260-1½ 987 (1000-1½)	1280-3 1007 (1100-3)	NA
CIRCLING*	1260-1¼ 987 (1000-1¼)	1260-1½ 987 (1000-1½)	1280-3 1007 (1100-3)	NA

RNAV (GPS) RWY 34