

NDB/DME RWY 34

NDB/DME TNC 347 Chan 119 (Y)	APCH CRS 339°	Rwy ldg THRE Arprt Elev 4702 242 273
--	-------------------------	---

AL-2334 [USAF]

TIN CITY LRRS (PATC)

▼ * Circling not authorized W of Rwy 16-34.
Night operations not authorized.

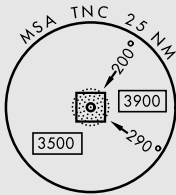
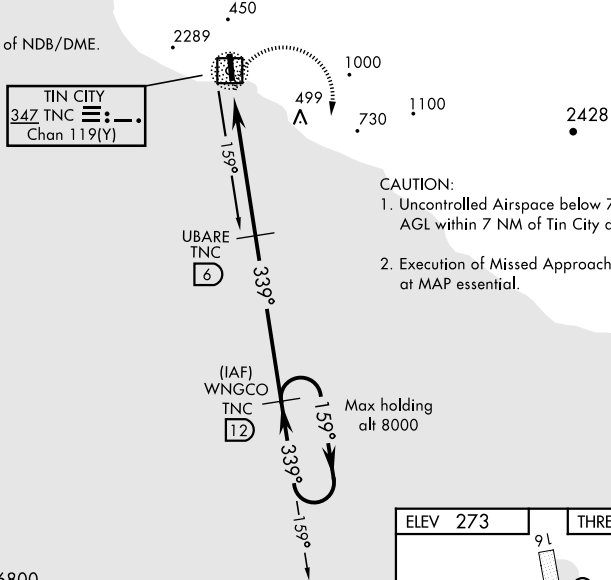
MISSED APPROACH: Climbing right turn to 3500 intercept TNC 159° bearing to WNGCO and hold. Continue climb-in-hold to 3500.

ANCHORAGE CENTER 133.3 290.4	TIN CITY RCO (NOME RADIO) 122.6	UNICOM 126.2 (CTAF)
--	---	-------------------------------

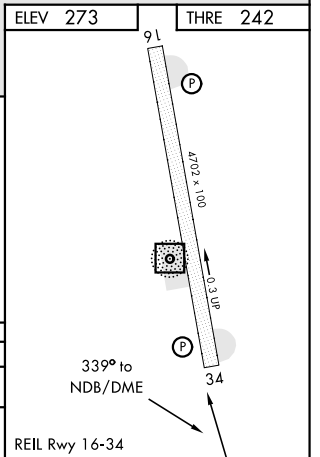
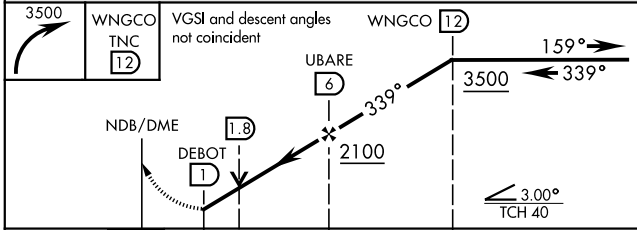
MILITARY CERTIFIED AIRCREWS OR AUTHORIZED CONTRACT AIRCRAFT ONLY

NOT FOR CIVIL USE

CAUTION:
2289' mountain 2 NM West of NDB/DME.



EMERG SAFE ALT 100 NM 6800



CATEGORY	A		B		C		D	
S-34	780-1	538 (600-1)	780-1½	538 (600-1½)	780-1½	538 (600-1½)	1120-2¾	847 (900-2¾)
CIRCLING*	780-1	507 (600-1)	780-1½	507 (600-1½)	780-1½	507 (600-1½)	1120-2¾	847 (900-2¾)

NDB/DME RWY 34

AK, 11 JUL 2024 to 05 SEP 2024

AK, 11 JUL 2024 to 05 SEP 2024