

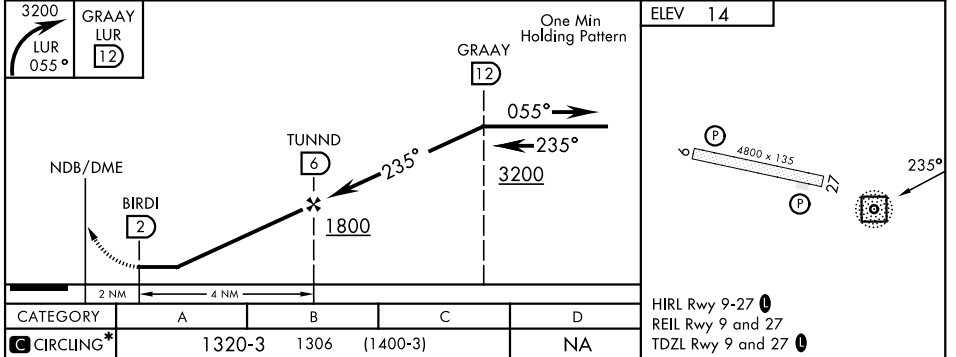
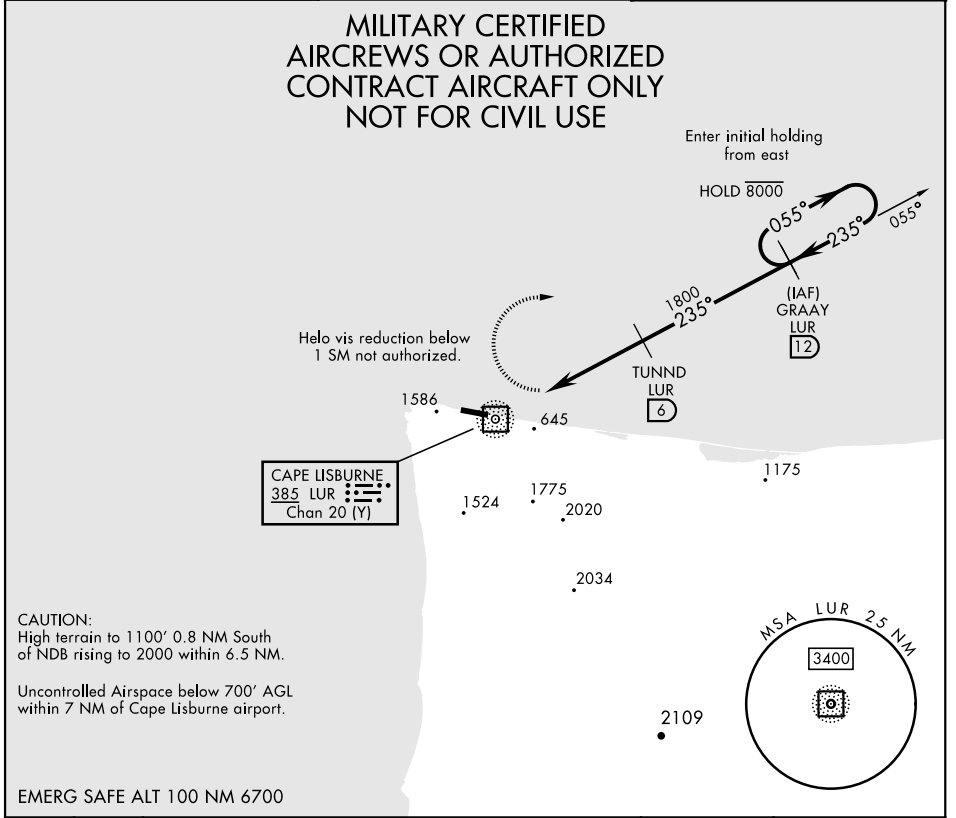
NDB/DME LUR <b>385</b> Chan <b>20</b> (Y)	APCH CRS <b>235°</b>	Rwy Idg THRE <b>N/A</b> Arpt Elev <b>14</b>	[USAF]	CAPE LISBURNE LRRS (PALU)
---	-------------------------	--	--------	---------------------------

▼ \*Circling not authorized S of Rwy 9-27.  
Night operations not authorized.

MISSED APPROACH: Climbing right turn to 3200, intercept LUR 055° bearing to GRAAY and hold.

ANCHORAGE CENTER APP/DEP CON <b>119.65 363.25</b>	KOTZEBUE RADIO <b>122.3</b>	CTAF <b>126.2</b> ①
--	--------------------------------	------------------------

**MILITARY CERTIFIED  
AIRCRAFT ONLY  
NOT FOR CIVIL USE**



AK, 31 OCT 2024 to 26 DEC 2024

AK, 31 OCT 2024 to 26 DEC 2024