

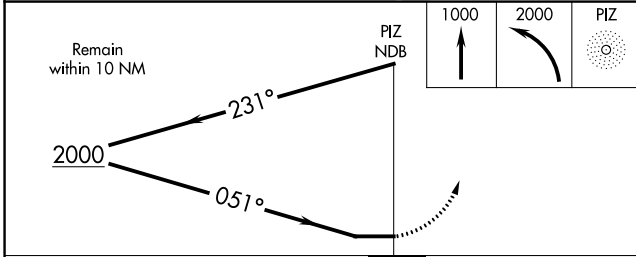
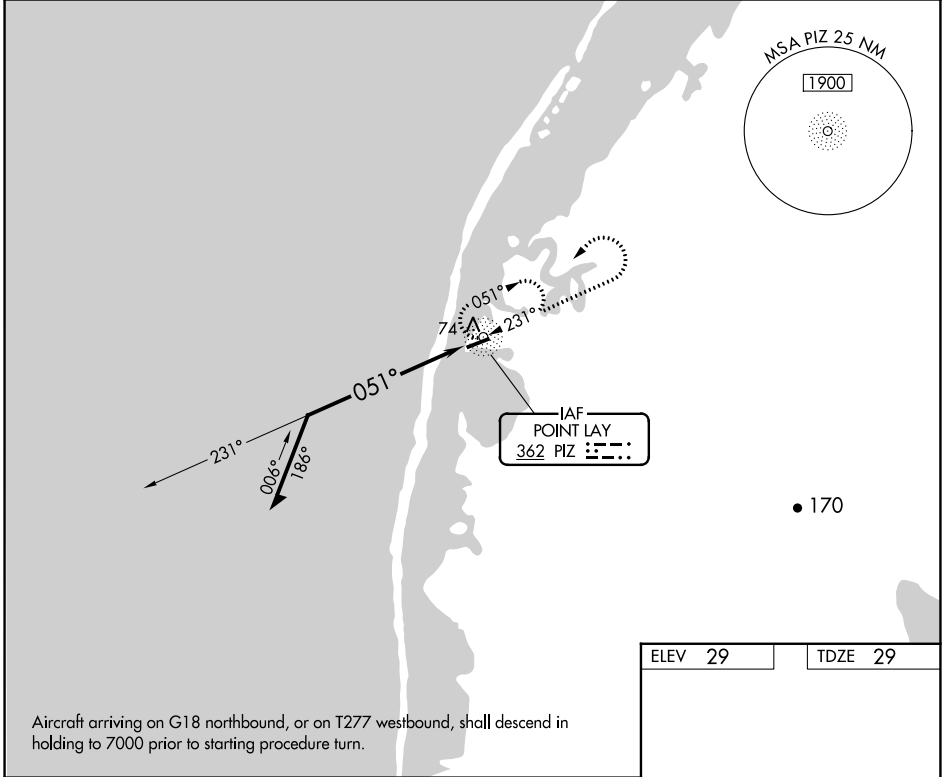
NDB PIZ <b>362</b>	APP CRS <b>051°</b>	Rwy Idg <b>4500</b> TDZE <b>29</b> Apt Elev <b>29</b>
-----------------------	------------------------	---

# NDB RWY 5

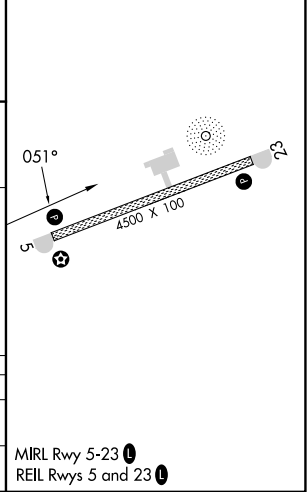
POINT LAY LRRS (PIZ) (PPIZ)

-33°C		MISSED APPROACH: Climb to 1000, then climbing left turn to 2000 direct PIZ NDB and hold.	
-------	--	--	--

AWOS-3P <b>135.65</b>	ANCHORAGE CENTER <b>119.65 363.25</b>	BARROW RADIO <b>122.4</b>	CTAF <b>122.8</b>
--------------------------	--	------------------------------	----------------------



ELEV 29	TDZE 29
---------	---------



CATEGORY	A	B	C	D
S-5	500-1 471 (500-1)		500-1½ 471 (500-1½)	NA
CIRCLING	500-1 471 (500-1)		500-1½ 471 (500-1½)	NA

AK, 05 SEP 2024 to 31 OCT 2024

AK, 05 SEP 2024 to 31 OCT 2024