

TACAN Z RWY 32

TACAN EIL Chan 98	APCH CRS 320°	Rwy ldg 14,530 TDZE 548 Arpt Elev 548
-----------------------------	-------------------------	--

AL-1729 [USAF]

EIELSON AFB (PAEI)

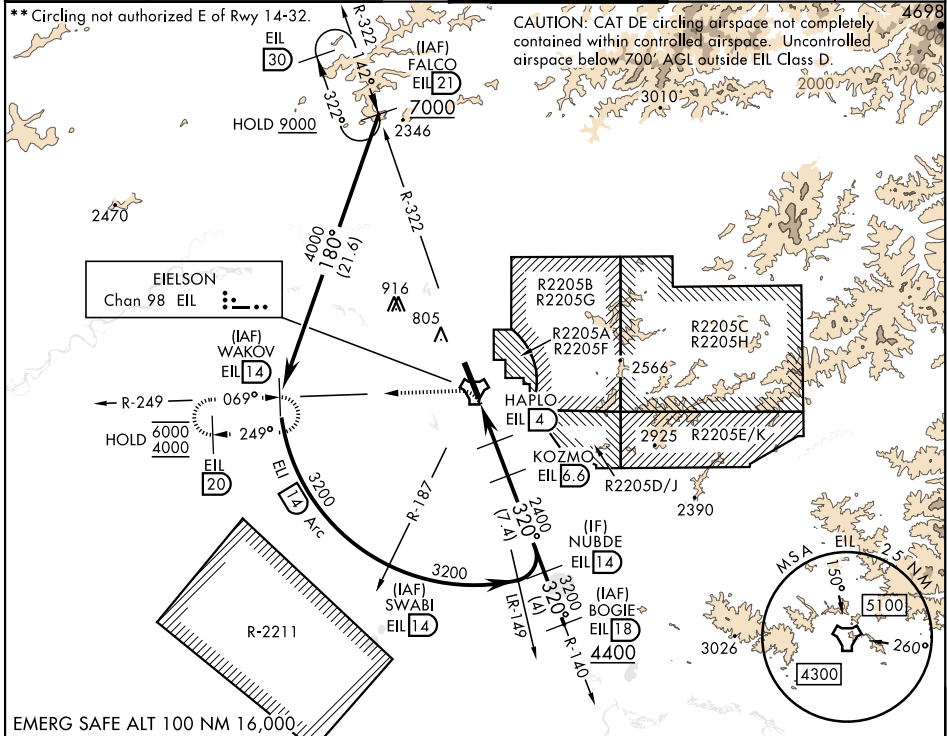
DME or RADAR required. RADAR required b/n FALCO-WAKOV.



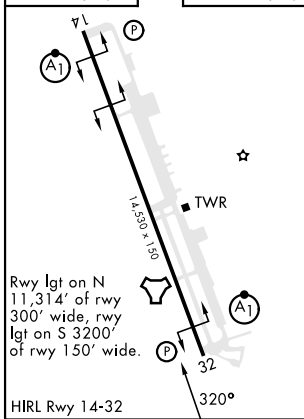
MISSED APPROACH: Climbing left turn on EIL R-249 to 4000 to WAKOV and hold. Continue climb in hold.

▼ *When ALS inop, increase CAT AB RVR to 55, vis to 1 mile; CAT CDE vis to 1 1/8 mile.

ATIS ★ 119.9 273.5	FAIRBANKS APP CON 127.1 251.1 360° - 179° 125.35 363.2 180° - 359°	TOWER ★ 127.2 352.05	GND CON 121.8 275.8	CLNC DEL 343.7
------------------------------	--	--------------------------------	-------------------------------	--------------------------



EMERG SAFE ALT 100 NM 16,000

TACAN Z RWY 32

ELEV 548	TDZE 548	WAKOV EIL 14	NUBDE 14	KOZMO 6.6	HAPLO 4	TACAN	
4000	4000	4000	3200	2400	1600	0.5	
R-249		R-187		R-149		R-140	
0.5		3 NM		2.6 NM			

CATEGORY	A	B	C	D	E
S-32 *	1040/24 492 (500-1/2)		1040/50 492 (500-1)		
** CIRCLING	1040-1 492 (500-1)		1040-1 1/2 492 (500-1 1/2)	1280-2 1/4 732 (800-2 1/4)	1280-2 1/2 732 (800-2 1/2)

TACAN Z RWY 32

AK, 05 SEP 2024 to 31 OCT 2024

AK, 05 SEP 2024 to 31 OCT 2024