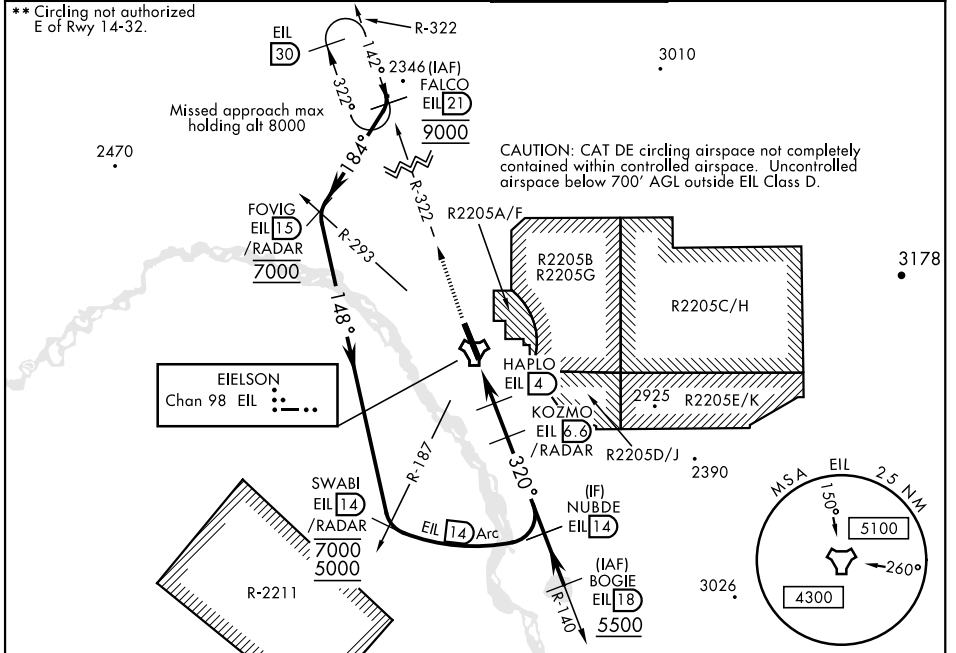


# TACAN RWY 32

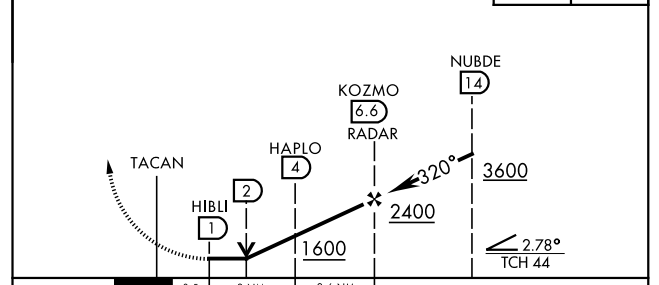
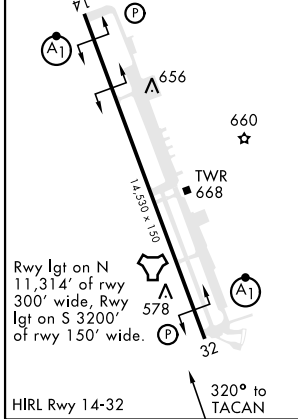
TACAN EIL Chan <b>98</b>	APCH CRS <b>320°</b>	Rwy ldg <b>14,530</b> TDZE <b>548</b> Arprt Elev <b>548</b>	AL-1729 [USAF]	EIELSON AFB (PAEI)
-----------------------------	-------------------------	---	----------------	--------------------

DME or ATC RADAR required.	ALSF-1 (A1)	MISSED APPROACH: Climb to 6000 on EIL TACAN R-322 to FALCO and hold, Continue climb-in-hold to 6000.
ATC RADAR required (between FALCO-FOVIG-SWABI)		
* When ALS inop, increase CAT AB RVR to 55 and vis to 1 mile; CAT CDE vis to 1 3/8 miles.		

ATIS ★ <b>119.9 273.5</b>	ASOS <b>118.525</b>	FAIRBANKS APP CON <b>127.1 251.1 360° - 179°</b> <b>125.35 363.2 180° - 359°</b>	EIELSON TOWER ★ <b>127.2 352.05</b>	GND CON <b>121.8 275.8</b>	CLNC DEL <b>343.7</b>
------------------------------	------------------------	--	--	-------------------------------	--------------------------



EMERG SAFE ALT 100 NM 16,000'	ELEV 548	TDZE 548	6000	FALCO R-322
			EIL R-322	(21)



CATEGORY	A	B	C	D	E
S-32 *	1040/24 492 (500-1/2)		1040/50 492 (500-1)		
CIRCLING **	1040-1 492 (500-1)		1040-1 1/2 492 (500-1 1/2)	1280-2 1/4 732 (800-2 1/4)	1280-2 1/2 732 (800-2 1/2)

# TACAN RWY 32

AK, 08 SEP 2022 to 03 NOV 2022

AK, 08 SEP 2022 to 03 NOV 2022