

FAIRBANKS, ALASKA

RNAV (GPS) RWY 14

APCH CRS	Rwy Idg	14,530
140°	TDZE	537
	Arpt Elev	548

AL-1729 (USAF)

EIELSON AFB (PAEI)

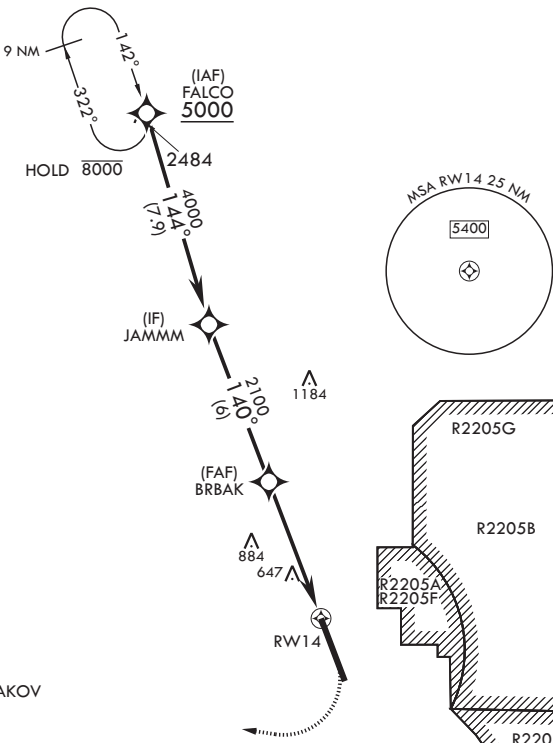
<p>⚠ * When ALS inop, increase RVR to 55 and vis to 1 mile. ** Circling not authorized E Rwy 14-32.</p>	<p>ALS-1</p>	<p>MISSED APPROACH: Climb to 1100 then climbing right turn to 4000 direct WAKOV and hold, continue climb-in-hold to 4000.</p>
---	--------------	---

<p>ATIS* 119.9 273.5</p>	<p>FAIRBANKS APP CON 125.35 363.2 180°-359° 127.1 251.1 360°-179°</p>	<p>TOWER* 127.2 352.05</p>	<p>GND CON 121.8 275.8</p>	<p>CLNC DEL 343.7</p>
------------------------------	---	--------------------------------	--------------------------------	---------------------------

DME/DME RNP - 0.3 NA

CAUTION: CAT DE circling airspace not completely contained within controlled airspace. Uncontrolled airspace below 700' AGL outside EIL Class D.

CAUTION: Holding not authorized at WAKOV unless approved by ATC.



EMERG SAFE ALT 100 NM 16,000

<p>FALCO 5000</p>	<p>JAMMM</p>	<p>BRBAK</p>	<p>1.4 NM to RWY 14</p>	<p>RWY 14</p>	<p>1100</p>	<p>4000</p>	<p>WAKOV</p>	<p>ELEV 548</p>	<p>TDZE 537</p>
<p>140° heading from FALCO to JAMMM and BRBAK.</p>					<p>140° to RWY 14 Rwy lgt on S 3200' of rwy 150' wide. Rwy lgt on N 11,314' of rwy 300' wide.</p>				
<p>2100 altitude at BRBAK.</p>					<p>BCN 660 TWR 668</p>				
<p>2.73 ≥ TCH 54</p>					<p>728</p>				
<p>5.2 NM distance to RWY 14</p>					<p>659</p>				
<p>32</p>					<p>HIRL all Rwys</p>				
CATEGORY	A	B	C	D	E				
LNAV MDA*	1000/24 463 (500-½)		1000/50	463	(500-1)				
CIRCLING**	1000-1 452 (500-1)	1040-1 492 (500-1)	1040-1½ 492 (500-1½)	1280-2¼ 732 (800-2¼)	1280-2½ 732 (800-2½)				

FAIRBANKS, ALASKA

64°40'N - 147°06'W

EIELSON AFB (PAEI)

Amdt 6 17JUN21
TERPS

RNAV (GPS) RWY 14

AK, 08 SEP 2022 to 03 NOV 2022

AK, 08 SEP 2022 to 03 NOV 2022