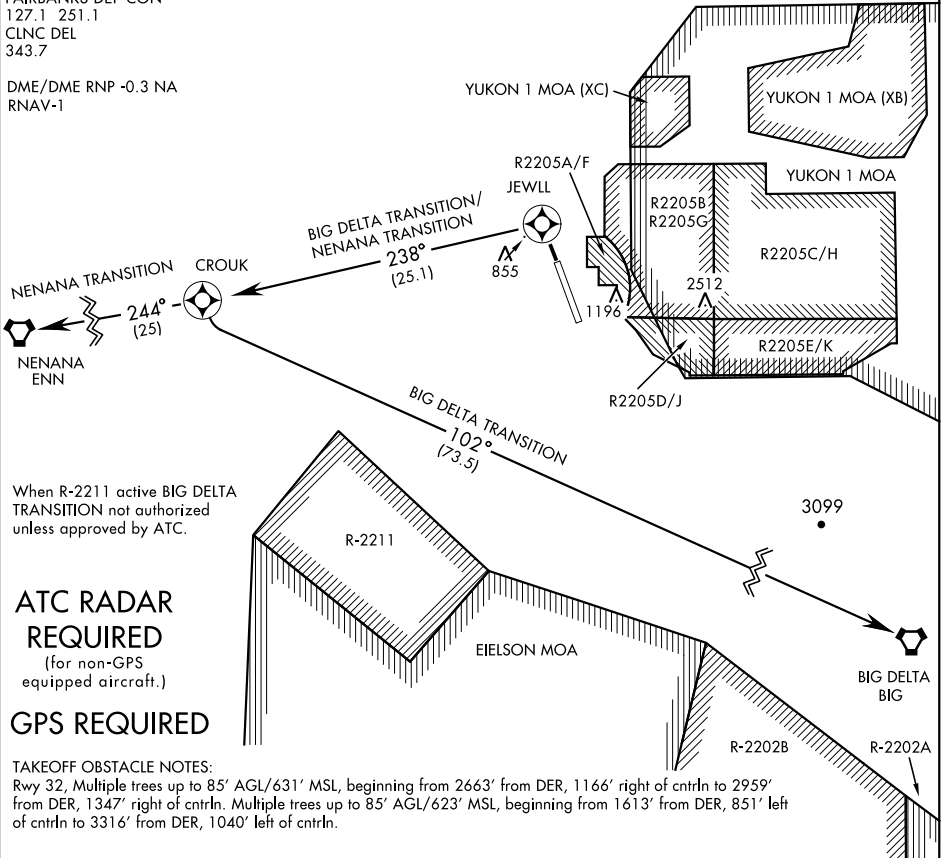


# JEWELL TWO DEPARTURE (RNAV) (JEWLL2•JEWLL)

AL-1729 [USAF]

ATIS ★  
119.9 273.5  
GND CON  
121.8 275.8  
TOWER ★  
127.2 352.05  
FAIRBANKS DEP CON  
127.1 251.1  
CLNC DEL  
343.7

DME/DME RNP -0.3 NA  
RNAV-1



When R-2211 active BIG DELTA TRANSITION not authorized unless approved by ATC.

**ATC RADAR REQUIRED**  
(for non-GPS equipped aircraft.)

**GPS REQUIRED**

**TAKEOFF OBSTACLE NOTES:**

Rwy 32, Multiple trees up to 85' AGL/631' MSL, beginning from 2663' from DER, 1166' right of cntrln to 2959' from DER, 1347' right of cntrln. Multiple trees up to 85' AGL/623' MSL, beginning from 1613' from DER, 851' left of cntrln to 3316' from DER, 1040' left of cntrln.



## DEPARTURE ROUTE DESCRIPTION

TAKEOFF RWY 32 (JEWLL2•JEWLL): Climb direct JEWLL, thence...

BIG DELTA TRANSITION (JEWLL2•BIG): Turn left, track 238° to CROUK then turn left, track 102° to BIG VORTAC.

NENANA TRANSITION (JEWLL2•ENN): Turn left, track 238° to CROUK then track 244° to ENN VORTAC.

AK, 08 SEP 2022 to 03 NOV 2022

AK, 08 SEP 2022 to 03 NOV 2022