

IIS or LOC/DME RWY 32

LOC I-EAF 109.9	APCH CRS 320°	Rwy Ldg 14,530 TDZE 548 Arpt Elev 548	AL-1729 [USAF]	EIELSON AFB (PAEI)
---------------------------	-------------------------	---	----------------	--------------------

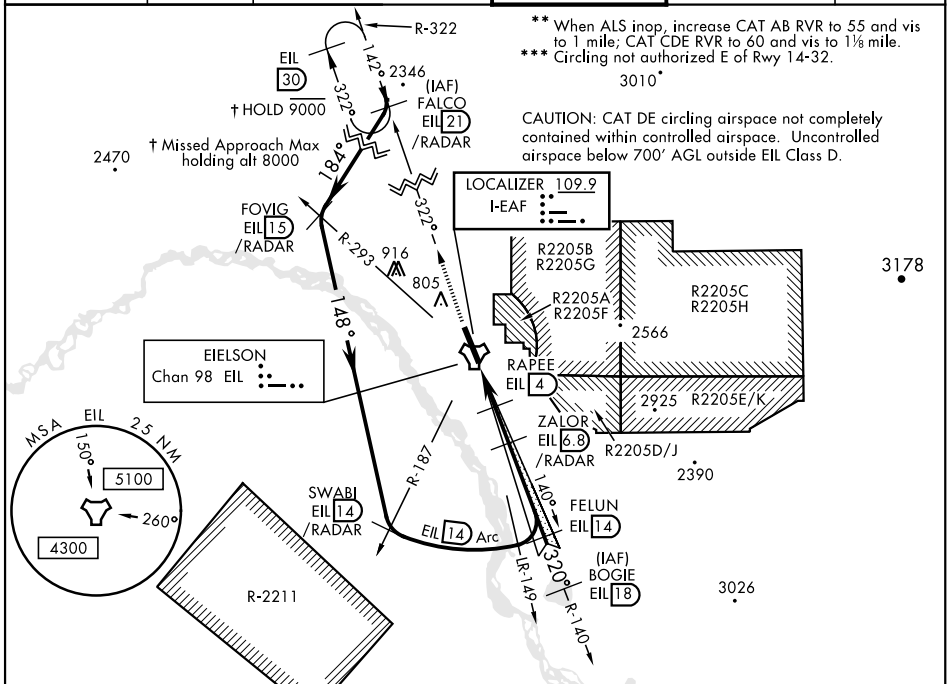
DME or RADAR required. RADAR required between FALCO-FOVIG-SWABI

ALSF-1

MISSED APPROACH: Climb to 6000 on EIL TACAN R-322 to FALCO and hold. Continue climb-in-hold to 6000.

▼ * When ALS inop, increase RVR to 40 and vis to 3/8 mile.

ATIS ★ 119.9 273.5	ASOS 118.525	FAIRBANKS APP CON 127.1 251.1 360° - 179° 125.35 363.2 180° - 359°	EIELSON TOWER ★ 127.2 352.05	GND CON 121.8 275.8	CLNC DEL 343.7
------------------------------	------------------------	--	--	-------------------------------	--------------------------



EMERG SAFE ALT 100 NM 16,000

ELEV 548 TDZE 548

VGSI and ILS glidepath not coincident (VGSI angle 2.70/TCH 44).

FALCO R-322 /RADAR 21

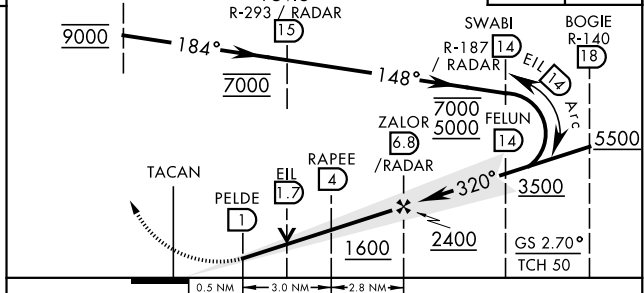
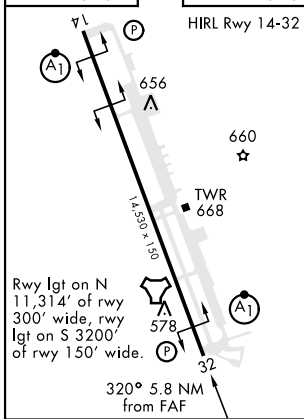
FOVIG R-293 /RADAR 15

SWABI R-187 /RADAR 14

BOGIE R-140 18

6000 EIL R-322 21

FALCO R-322 21



CATEGORY	A	B	C	D	E
S-ILS 32*	748/24 200 (200-1/2)				
S-LOC 32**	960/24 412 (500-1/2)	960/40 412 (500-3/4)			
CIRCLING***	1000-1 452 (500-1)	1040-1 492 (500-1)	1040-1 1/2 492 (500-1 1/2)	1280-2 1/4 732 (800-2 1/4)	1280-2 1/2 732 (800-2 1/2)

IIS or LOC/DME RWY 32

AK, 08 SEP 2022 to 03 NOV 2022

AK, 08 SEP 2022 to 03 NOV 2022