

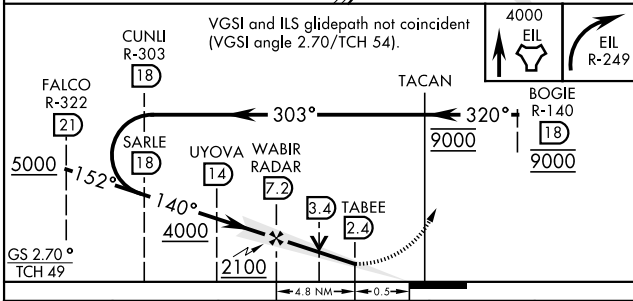
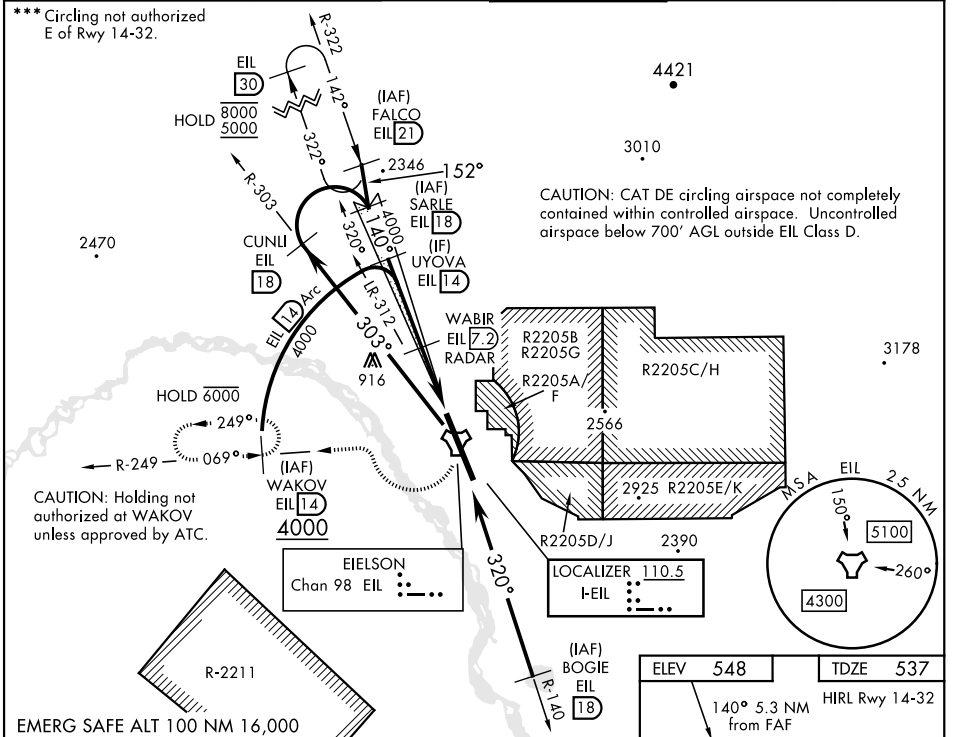
FAIRBANKS, ALASKA

ILS or LOC/DME RWY 14

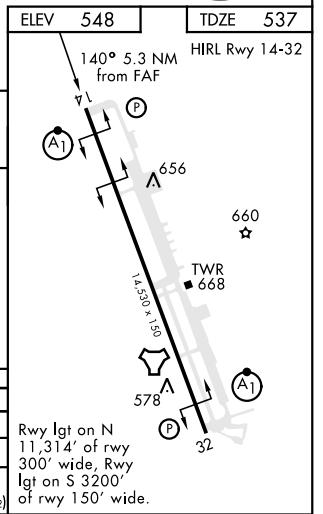
LOC I-EIL 110.5	APCH CRS 140°	Rwy lgt 14,530 TDZE 537 Arpt Elev 548	AL-1729 [USAF]	EIELSON AFB (PAEI)
---------------------------	-------------------------	--	----------------	--------------------

RADAR or DME required.		ALSIF-1	MISSED APPROACH: Climb to 4000 direct EIL TACAN, continue climbing right turn to intercept EIL R-249 to WAKOV and hold. Continue climb-in-hold to 4000.
* When ALS inop, incr RVR to 40, and vis to 3/4 mile. ** When ALS inop, incr CAT AB RVR to 55, and vis to 1 mile; CAT CDE vis to 1 1/2 miles.			

ATIS ★ 119.9 273.5	ASOS 118.525	FAIRBANKS APP CON 127.1 251.1 360°-179° 125.35 363.2 180°-359°	EIELSON TOWER ★ 127.2 352.05	GND CON 121.8 275.8	CLNC DEL 343.7
------------------------------	------------------------	--	--	-------------------------------	--------------------------



CATEGORY	A	B	C	D	E
S-ILS 14 *	737/24		200	(200-1/2)	
S-LOC 14 **	1000/24	463 (500-1/2)	1000/50	463 (500-1)	
CIRCLING ***	1000-1 452 (500-1)	1040-1 492 (500-1)	1040-1 1/2 492 (500-1 1/2)	1280-2 1/4 732 (800-2 1/4)	1280-2 1/2 732 (800-2 1/2)



AK, 08 SEP 2022 to 03 NOV 2022

AK, 08 SEP 2022 to 03 NOV 2022

FAIRBANKS, ALASKA

64°40'N-147°06'W

EIELSON AFB (PAEI)

Amdt 8 02DEC21
TERPS

ILS or LOC/DME RWY 14