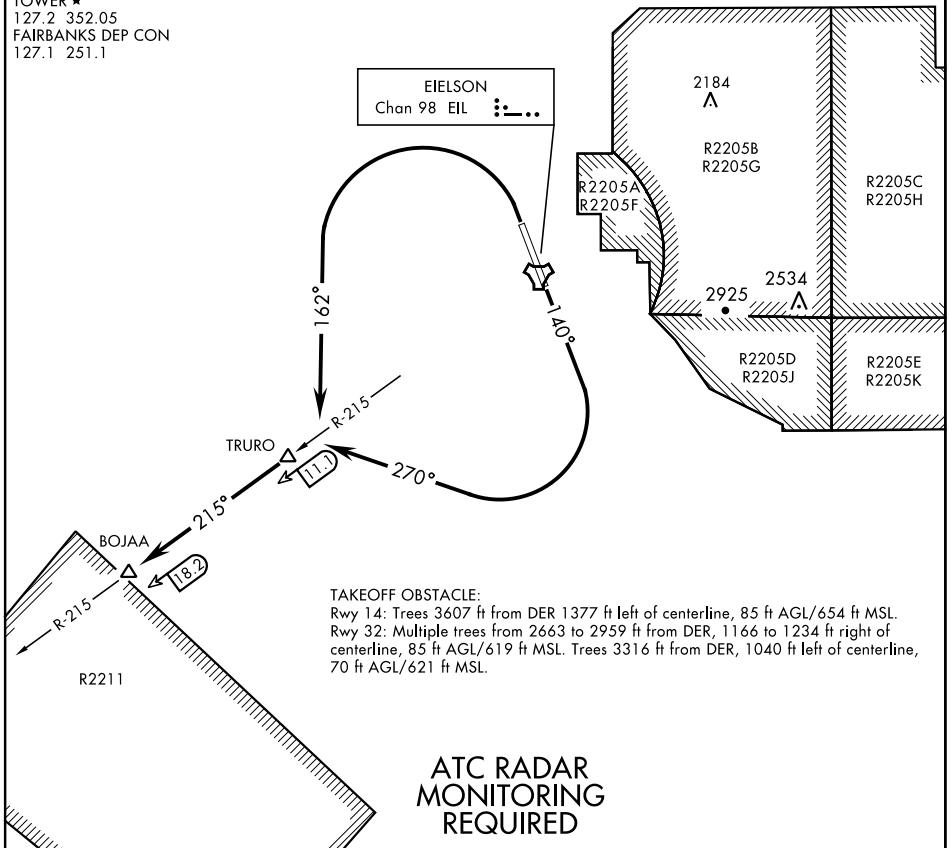


BOJAA TWO DEPARTURE (BOJAA2•BOJAA)

ATIS ★ 119.9 273.5
 CLNC DEL 343.7
 GND CON 121.8 275.8
 TOWER ★ 127.2 352.05
 FAIRBANKS DEP CON 127.1 251.1

AL-1729 [USAF]



AK, 08 SEP 2022 to 03 NOV 2022

AK, 08 SEP 2022 to 03 NOV 2022

DEPARTURE ROUTE DESCRIPTION

TAKEOFF RWY 14: Climb heading 140° to 1100, then climbing right turn to heading 270°, intercept EIL TACAN R-215 outbound to BOJAA. Climb and maintain 3700 or assigned altitude.

TAKEOFF RWY 32: Climbing left turn to heading 162° to TRURO then continue outbound on EIL TACAN R-215 to BOJAA. Maintain at or above 3700 or assigned altitude.

BOJAA TWO DEPARTURE (BOJAA2•BOJAA)

Orig 26MAR20