

# RNAV (RNP) Z RWY 7R

TED STEVENS ANCHORAGE INTL (ANC) (PANC)

APP CRS	Rwy Idg	<b>12400</b>
<b>074°</b>	TDZE	<b>132</b>
	Apt Elev	<b>151</b>

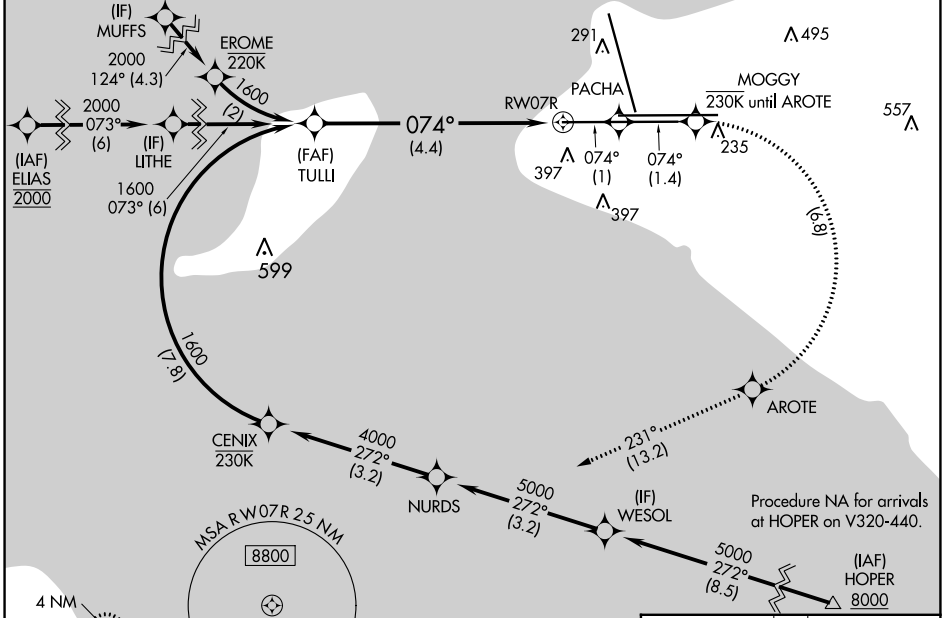
RNP AR APCH, RF required.

**▼** Missed approach requires RNP less than 1.0.  
**☉** -22°C For uncompensated Baro-VNAV systems, procedure NA below -18°C (0°F) or above 54°C (130°F).  
 For inop ALS, increase RNP 0.30 all Cats visibility to 1 3/8 SM.

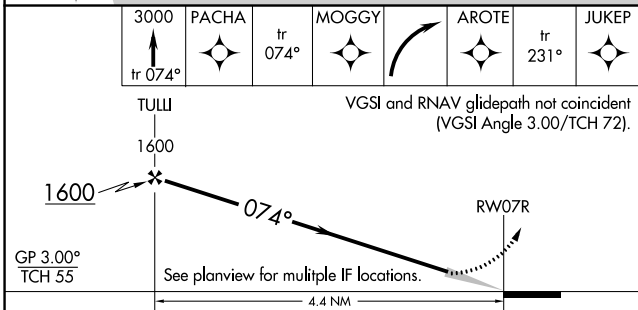
ALSF-2

**MISSED APPROACH:** Climb to 3000 on the missed approach route to JUKEP and hold.

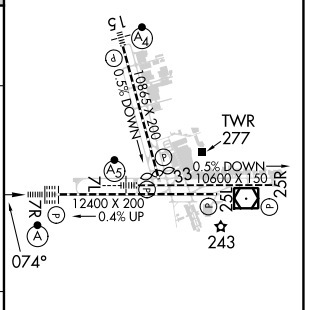
D-ATIS <b>135.5</b>	ANCHORAGE APP CON <b>118.6 290.5</b>	ANCHORAGE TOWER <b>118.3 257.8</b>	GND CON <b>121.9 338.25</b>	CLNC DEL <b>119.4 323.1</b>
------------------------	---	---------------------------------------	--------------------------------	--------------------------------



**RADAR REQUIRED**



ELEV 151	<b>D</b> TDZE 132
----------	-------------------



CATEGORY	A	B	C	D
RNP 0.30 DA	562/50 430 (500-1)			

## AUTHORIZATION REQUIRED

REIL Rwy 33  
 TDZ/CL Rwy 7L and 7R  
 HIRL all Rwy

AK, 11 JUL 2024 to 05 SEP 2024

AK, 11 JUL 2024 to 05 SEP 2024