

APP CRS Rwy ldg **10400**
 329° TDZE **121**
 Apt Elev **151**

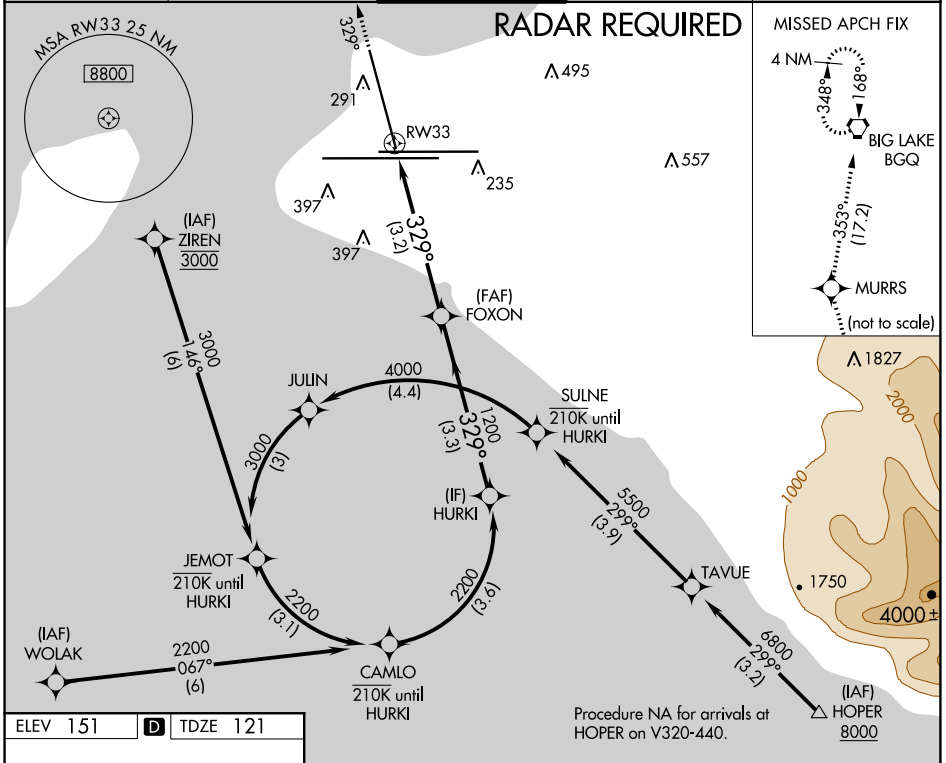
RNAV (RNP) RWY 33

TED STEVENS ANCHORAGE INTL (ANC) (PANC)

RNP AR APCH. RF required.
 For uncompensated Baro-VNAV systems,
 procedure NA below -17°C or above 54°C.

MISSED APPROACH: Climb to 4000 on the RNAV
 missed approach route to BGQ VORTAC and hold.

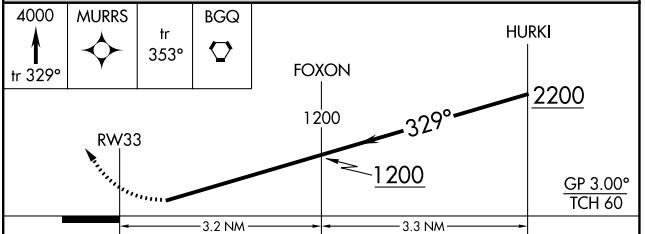
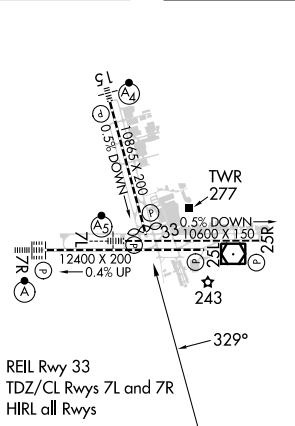
D-ATIS 135.5	ANCHORAGE APP CON 118.6 290.5	ANCHORAGE TOWER 118.3 257.8	GND CON 121.9 338.25	CLNC DEL 119.4 323.1
------------------------	---	---------------------------------------	--------------------------------	--------------------------------



AK, 11 JUL 2024 to 05 SEP 2024

AK, 11 JUL 2024 to 05 SEP 2024

ELEV 151 **D** TDZE 121



CATEGORY	A	B	C	D
RNP 0.11 DA		463-1	342 (400-1)	
RNP 0.20 DA		525-1½	404 (400-1½)	
RNP 0.30 DA		687-1½	566 (600-1½)	

AUTHORIZATION REQUIRED