

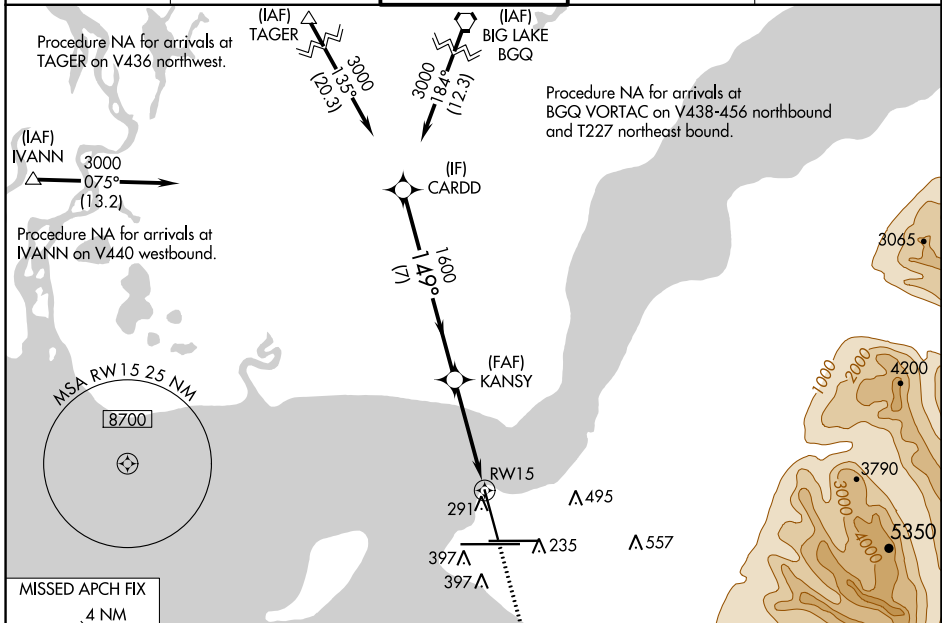
WAAS CH 90115 W15A	APP CRS 149°	Rwy Idg 10000 TDZE 151 Apt Elev 151
--	------------------------	--

RNAV (GPS) RWY 15

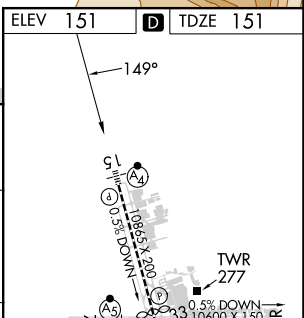
TED STEVENS ANCHORAGE INTL (ANC) (PANC)

RNP APCH.	MALSF A4	MISSED APPROACH: Climb to 3000 direct ZUXAN and on track 229° to JUKEP and hold.
<p>▼ Inop table does not apply to LPV, LNAV/VNAV. For uncompensated Baro-VNAV systems, LNAV/VNAV NA below -21°C or above 54°C.</p> <p>☞ -21°C For inop ALS, increase LNAV Cat C/D visibility to 1 3/8 SM.</p>		

D-ATIS 135.5	ANCHORAGE APP CON 118.6 290.5	ANCHORAGE TOWER 118.3 257.8	GND CON 121.9 338.25	CLINC DEL 119.4 323.1
------------------------	---	---------------------------------------	--------------------------------	---------------------------------



CATEGORY	A	B	C	D
LPV DA	351/40	200 (200-3/4)	401/40	250 (300-3/4)
LNAV/VNAV DA	404/40 253 (300-3/4)			
LNAV MDA	600/40	449 (500-3/4)	600/60	449 (500-1 1/4)
CIRCLING	700-1	549 (600-1)	800-1 3/4 649 (700-1 3/4)	920-2 1/2 769 (800-2 1/2)



<p>GP 3.20° TCH 60</p> <p>3000</p> <p>1600</p> <p>7 NM</p> <p>3.3 NM</p> <p>0.8 NM</p> <p>RWY 15</p> <p>ZUXAN</p> <p>KANSY</p> <p>CARDD</p> <p>JUKEP</p> <p>tr 229°</p> <p>*0.8 NM to RWY 15</p> <p>*LNAV only</p>	<p>ELEV 151</p> <p>TDZE 151</p> <p>149°</p> <p>10845 X 200</p> <p>10800 X 150</p> <p>12400 X 200</p> <p>10500 X 150</p> <p>TWR 277</p> <p>0.5% DOWN</p> <p>0.4% UP</p> <p>243</p> <p>REIL Rwy 33</p> <p>TDZ/CL Rws 7L and 7R</p> <p>HIRL all Rws</p>
--	--

AK, 05 SEP 2024 to 31 OCT 2024

AK, 05 SEP 2024 to 31 OCT 2024