

(SNAAG.NEELL6) 18144

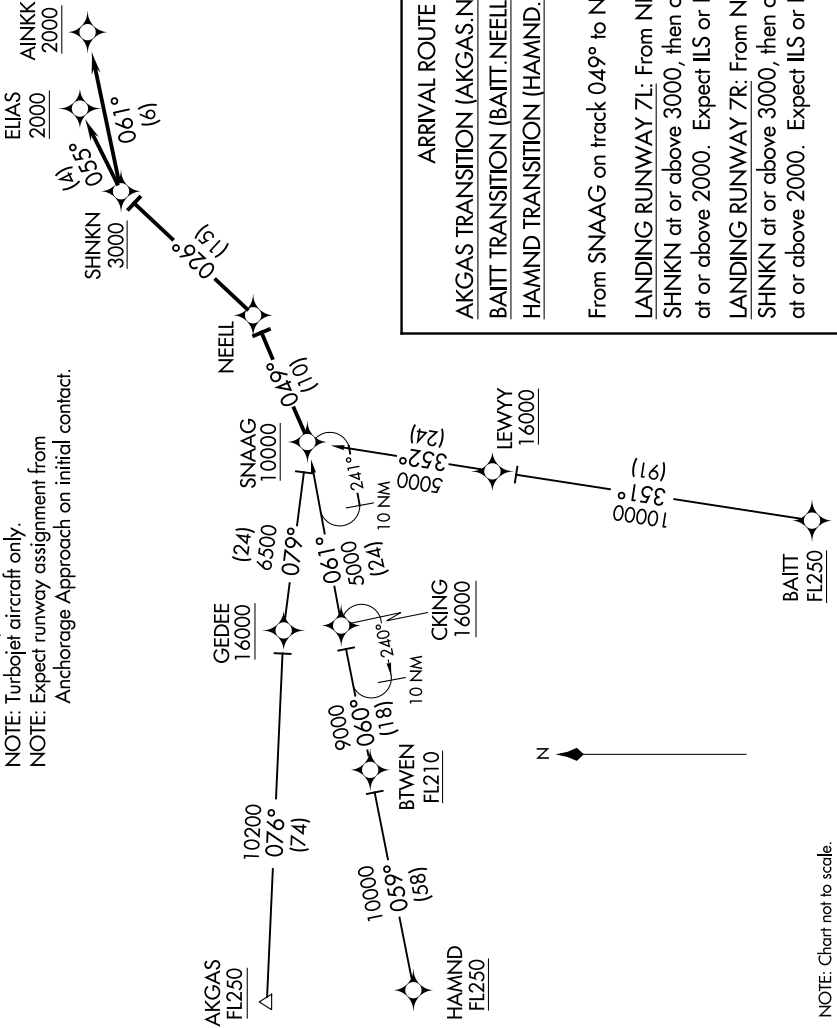
# NEELL SIX ARRIVAL (RNAV)

TED STEVENS ANCHORAGE INTL (ANC)(PANC)  
AL-1500 (FAA) ANCHORAGE, ALASKA

AK, 05 SEP 2024 to 31 OCT 2024

ANCHORAGE APP CON  
126.4 270.25  
D-ATIS  
135.5

- NOTE: RNAV 1.
- NOTE: GPS required.
- NOTE: Turbojet aircraft only.
- NOTE: Expect runway assignment from Anchorage Approach on initial contact.



**ARRIVAL ROUTE DESCRIPTION**

AKGAS TRANSITION (AKGAS.NEELL6)  
BAITT TRANSITION (BAITT.NEELL6)  
HAMND TRANSITION (HAMND.NEELL6)

From SNAAG on track 049° to NEELL.

LANDING RUNWAY 7L: From NEELL on track 026° to cross SHNKN at or above 3000, then on track 061° to cross AINNK at or above 2000. Expect ILS or LOC/DME RWY 7L approach.

LANDING RUNWAY 7R: From NEELL on track 026° to cross SHNKN at or above 3000, then on track 055° to cross ELIAS at or above 2000. Expect ILS or LOC/DME RWY 7R approach.

NOTE: Chart not to scale.

AK, 05 SEP 2024 to 31 OCT 2024

# NEELL SIX ARRIVAL (RNAV)

(SNAAG.NEELL6) 01FEB18

ANCHORAGE, ALASKA  
TED STEVENS ANCHORAGE INTL (ANC)(PANC)