

KNIK THREE DEPARTURE

TED STEVENS ANCHORAGE INTL (ANC) (PANC)
AL-1500 (FAA) ANCHORAGE, ALASKA

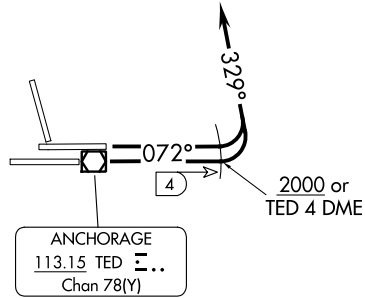
**TOP ALTITUDE:
FL200**

ANCHORAGE DEP CON 118.6 290.5
D-ATIS 135.5
CLNC DEL 119.4 323.1
GND CON 121.9 338.25
ANCHORAGE TOWER 118.3 257.8

TALKEETNA
116.2 TKA [Morse code] -
Chan 109

BIG LAKE
112.5 BQG [Morse code] -
Chan 72

△ NODLE
13700



ANCHORAGE
113.15 TED [Morse code] ..
Chan 78(Y)

NOTE: RADAR required.
NOTE: Aircraft cleared via NODLE FIX
cross at or above 13700 for terrain.

TAKEOFF MINIMUMS

Rwys 15, 25L/R, 33: NA-ATC.
Rwy 7L: Standard with minimum climb of 253' per NM to 400.
Rwy 7R: Standard with minimum climb of 285' per NM to 400.

NOTE: Chart not to scale.



DEPARTURE ROUTE DESCRIPTION

TAKEOFF RUNWAYS 7L/R: Climb heading 072° to 2000 or TED 4 DME, whichever comes first, then climbing left turn heading 329° for vectors to assigned route or fix. Maintain FL200 or assigned altitude, expect filed altitude 10 minutes after departure.

All aircraft, climb as rapidly as practical through 3000, if unable to reach 2000 by TED 4 DME advise ATC prior to departure.

KNIK THREE DEPARTURE