

24193

AIRPORT DIAGRAM

TED STEVENS ANCHORAGE INTL (ANC) (PANC)
AL-1500 (FAA)
ANCHORAGE, AK

D-ATIS
135.5
ANCHORAGE TOWER
118.3 257.8
GND CON
121.9 338.25
CLNC DEL
119.4 323.1
PDC

D

RWYS 07L-25R, 15-33
PCN 81 F/A/W/T
S-75, D-175, 2D-400, 2D/2D2-900
RWY 07R-25L
PCN 81 F/A/W/T
S-75, D-175, 2D-400, 2D/2D2-1300

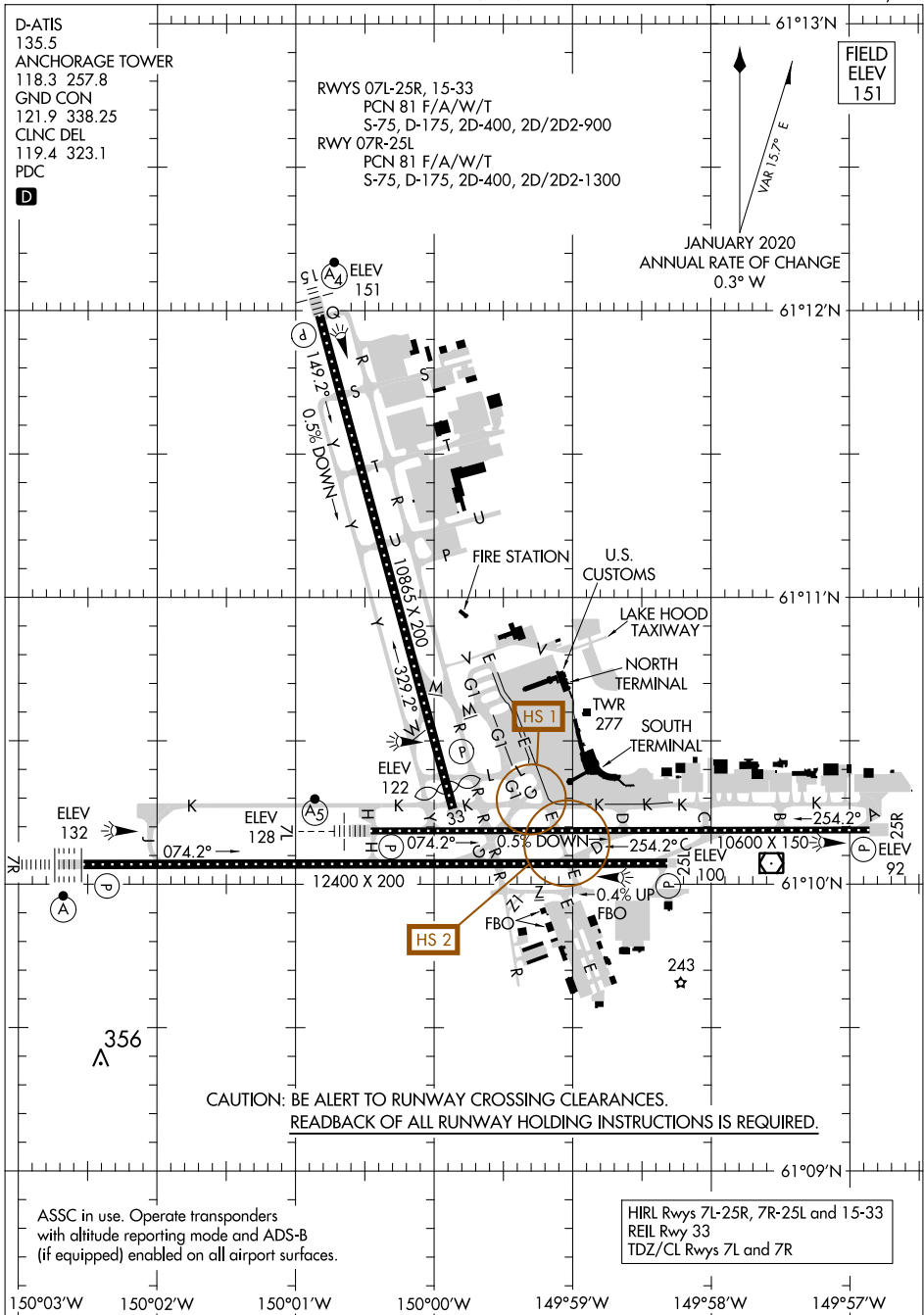
FIELD
ELEV
151

VAR 15.7° E

JANUARY 2020
ANNUAL RATE OF CHANGE
0.3° W

AK, 05 SEP 2024 to 31 OCT 2024

AK, 05 SEP 2024 to 31 OCT 2024



CAUTION: BE ALERT TO RUNWAY CROSSING CLEARANCES.
READBACK OF ALL RUNWAY HOLDING INSTRUCTIONS IS REQUIRED.

ASSC in use. Operate transponders with altitude reporting mode and ADS-B (if equipped) enabled on all airport surfaces.

HIRL Rwy 7L-25R, 7R-25L and 15-33
REIL Rwy 33
TDZ/CL Rwy 7L and 7R

AIRPORT DIAGRAM
24193

ANCHORAGE, AK
TED STEVENS ANCHORAGE INTL (ANC) (PANC)