

RNAV (GPS) RWY 28

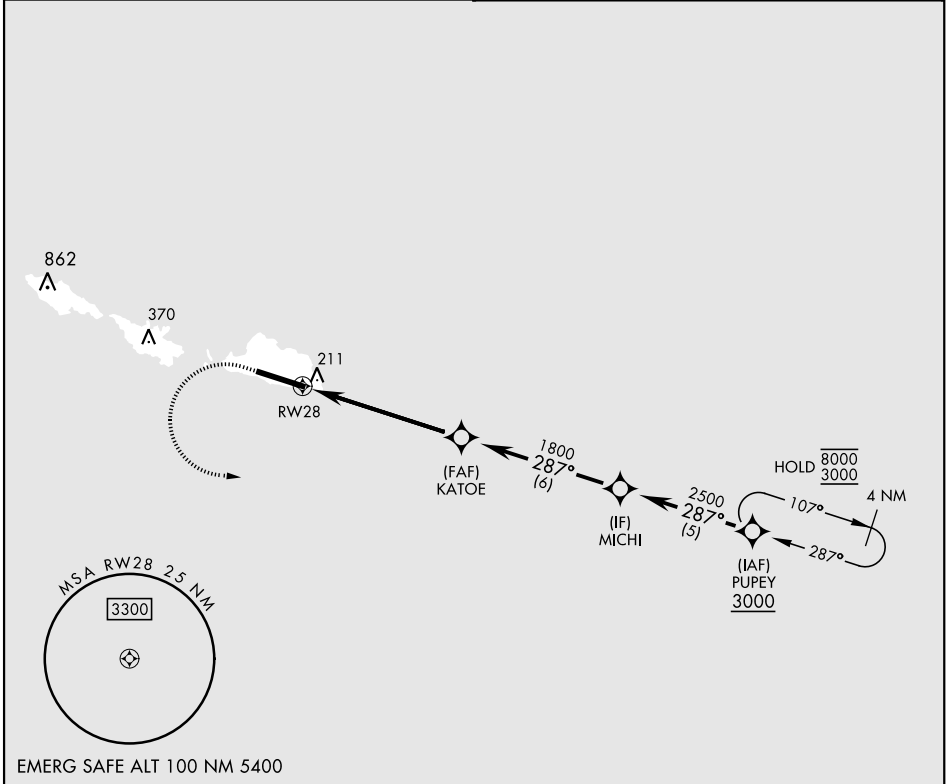
APCH CRS	Rwy ldg 10,004
287°	TDZE 93
	Arpt Elev 98

[USAF]

EARECKSON AS (PASY)

RNP APCH - GPS	SALS	MISSED APPROACH: Climb to 600, then climbing left turn to 3000, direct PUPEY and hold.
* When ALS inop, increase CAT CDE vis to 1 1/2 miles. ** Circling not authorized N of Rwy 10-28.		

ANCHORAGE CENTER 119.1 339.8	CTAF 127.2 0 352.05 0
--	---------------------------------



AK, 31 OCT 2024 to 26 DEC 2024

AK, 31 OCT 2024 to 26 DEC 2024

600	3000	PUPEY	ELEV	98	TDZE	93
CATEGORY	A	B	C	D	E	
LNAV MDA*	480-1		387	(400-1)		
CIRCLING**	480-1 382 (400-1)	560-1 462 (500-1)	560-1 1/2 462 (500-1 1/2)	660-2 562 (600-2)	680-2 582 (600-2)	HIRL Rwy 10-28 REIL Rwy 10 and 28

RNAV (GPS) RWY 28