

KING SALMON, ALASKA

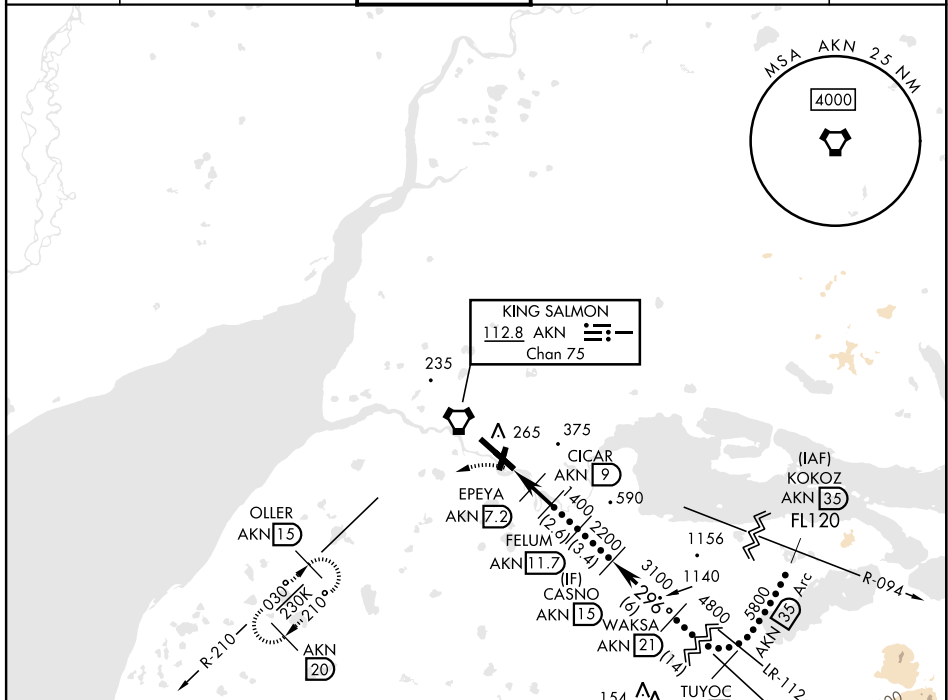
HI-VOR Z or TACAN Z RWY 30

VORTAC AKN 112.8 Chan 75	APCH CRS 296°	Rwy Idg TDZE 73 Arpt Elev 73	[USAF]	KING SALMON (AKN) (PAKN)
--	-------------------------	--	--------	--------------------------

DME required. **33**-31° C

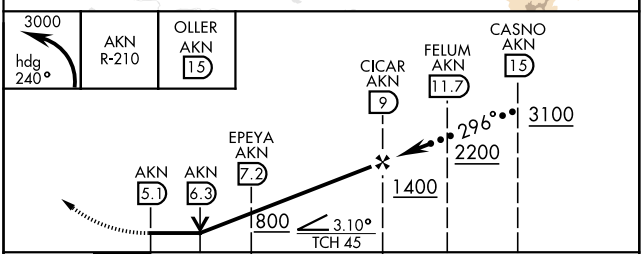
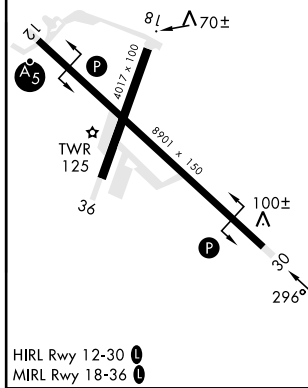
MISSED APPROACH: Climbing left turn to 3000 on heading 240° and on AKN VORTAC R-210 to OLLER/ 15 DME and hold.

ATIS 128.8	ANCHORAGE CENTER 124.8 354.0	TOWER ★ 118.3 279.5	GND CON 121.9	CTAF 121.90 352.05	UNICOM 122.95
----------------------	--	-------------------------------	-------------------------	------------------------------	-------------------------



EMERG SAFE ALT 100 NM 9900

ELEV 73	D	TDZE 73
Rwy 12 Idg 8501'		
Rwy 30 Idg 8501'		



CATEGORY	C	D	E
S-30	480-1½	407	(500-1½)
C CIRCLING	580-1½ 507 (600-1½)	900-2¾ 827 (900-2¾)	960-3 887 (900-3)

KING SALMON, ALASKA 58°41'N-156°39'W KING SALMON (AKN) (PAKN)
 Amdt 6 03NOV22

HI-VOR Z or TACAN Z RWY 30

AK, 31 OCT 2024 to 26 DEC 2024

AK, 31 OCT 2024 to 26 DEC 2024