

KING SALMON, ALASKA

HI-VOR Z or TACAN Z RWY 12

VORTAC AKN 112.8 Chan 75	APCH CRS 116°	Rwy ldg 8501 TDZE 62 Arpt Elev 73
--	-------------------------	--

[USAF]

KING SALMON (AKN) (PAKN)

DME required. RADAR required for procedure entry.

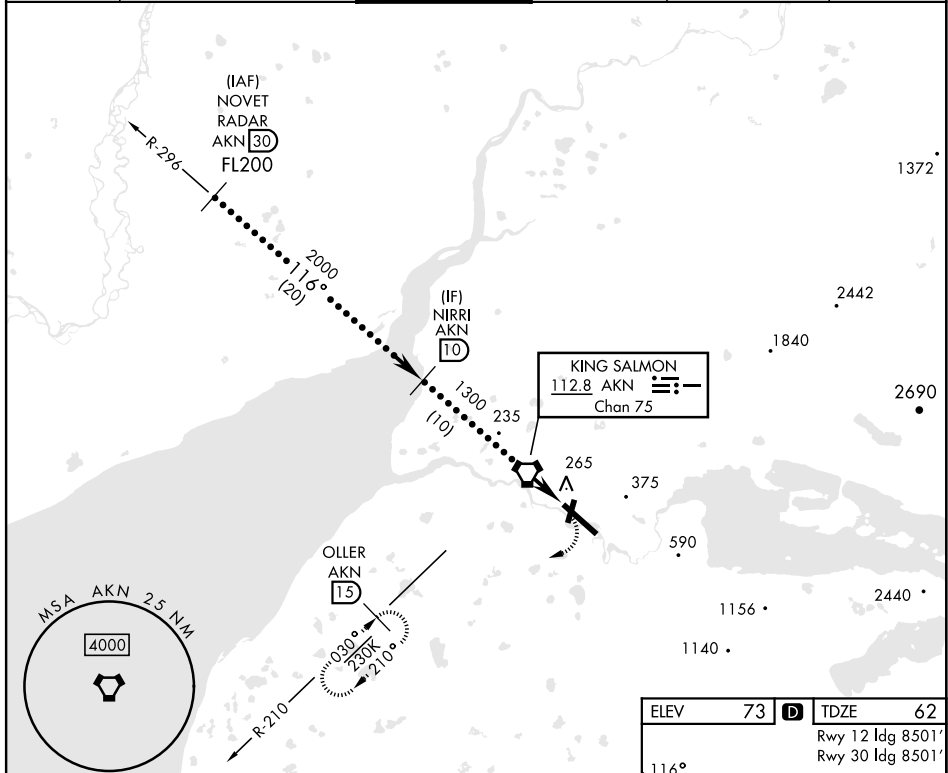
▼ *When ALS inop, increase vis to 1½ miles.
When control tower closed, increase RVR to 50.

33 -31° C

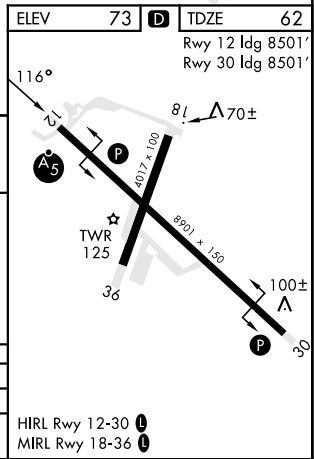
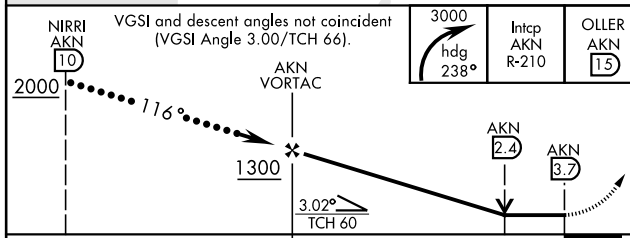


MISSED APPROACH: Climbing right turn to 3000 on heading 238° and AKN VORTAC R-210 to OLLER/15 DME and hold.

ATIS 128.8	ANCHORAGE CENTER 124.8 354.0	TOWER ★ 118.3 279.5	GND CON 121.9	CTAF 121.90 352.05	UNICOM 122.95
----------------------	--	-------------------------------	-------------------------	------------------------------	-------------------------



EMERG SAFE ALT 100 NM 9900



CATEGORY	C	D	E
S-12*	520-45	458	(500-7½)
CIRCLING	580-1½	900-2¾	960-3
	507 (600-1½)	827 (900-2¾)	887 (900-3)

HIRL Rwy 12-30 **L**
MIRL Rwy 18-36 **L**

KING SALMON, ALASKA

58°41'N-156°39'W

KING SALMON (AKN) (PAKN)

Amtd 5 26DEC24

HI-VOR Z or TACAN Z RWY 12

AK, 26 DEC 2024 to 20 FEB 2025

AK, 26 DEC 2024 to 20 FEB 2025