

APP CRS <b>031°</b>	Rwy Idg <b>5576</b>
	TDZE <b>25</b>
	Apt Elev <b>38</b>

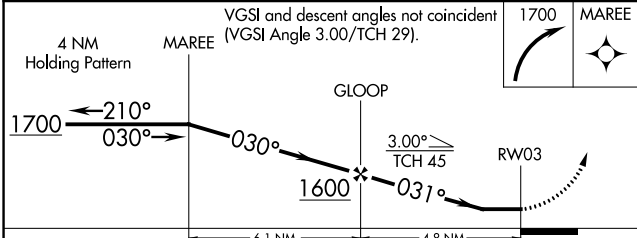
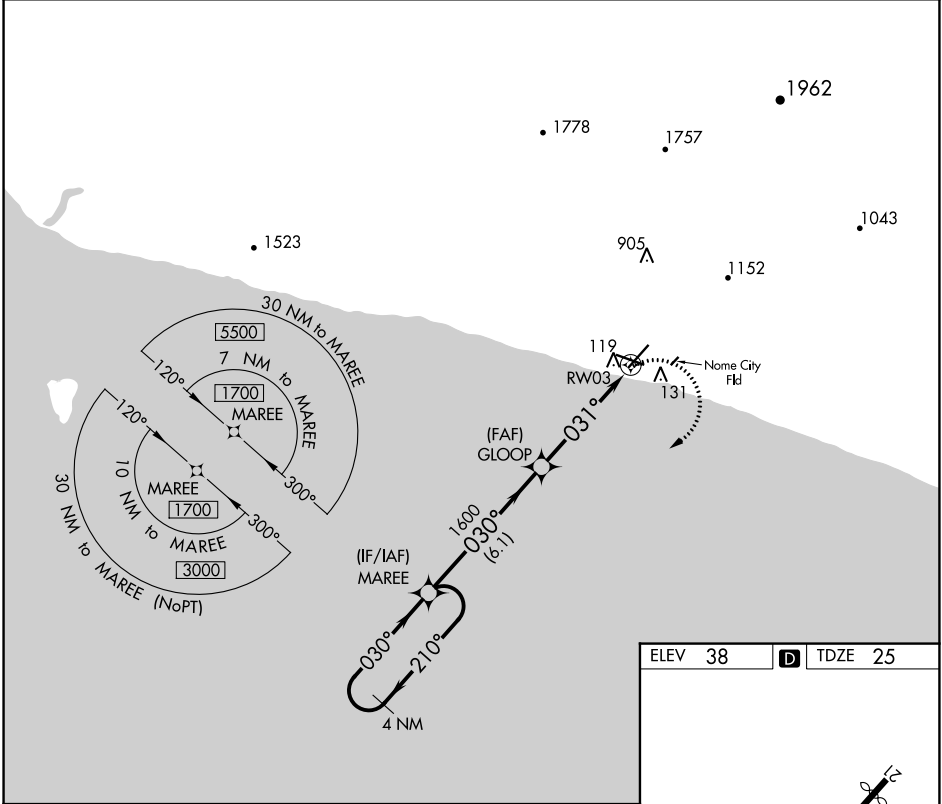
# RNAV (GPS) RWY 3

NOME (OME)(PAOM)

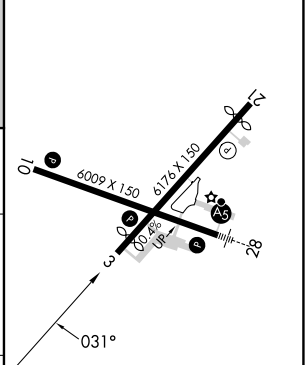
**⚠** DME/DME RNP-0.3 NA. Helicopter visibility reduction below 1 SM NA. Night landing: Rwy 21 NA. Circling NA for Cats C and D north of Rwy 10-28.

MISSED APPROACH: Climbing right turn to 1700 direct MAREE and hold.

AFIS <b>119.925</b>	ANCHORAGE CENTER <b>133.3 290.4</b>	NOME RADIO <b>123.6 (CTAF)</b> <b>Ⓛ</b>
------------------------	--	--



ELEV 38	<b>D</b> TDZE 25
---------	------------------



CATEGORY	A	B	C	D
LNVA MDA	440-1	415 (500-1)	440-1¼	415 (500-1¼)
<b>C</b> CIRCLING	540-1	502 (600-1)	540-1½	700-2 662 (700-2)

REIL Rwy 3 and 10 **Ⓛ**  
 HIRL Rwy 10-28 **Ⓛ**  
 MIRL Rwy 3-21 **Ⓛ**

AK, 31 OCT 2024 to 26 DEC 2024

AK, 31 OCT 2024 to 26 DEC 2024