

NOME, ALASKA

AL-1231 (FAA)

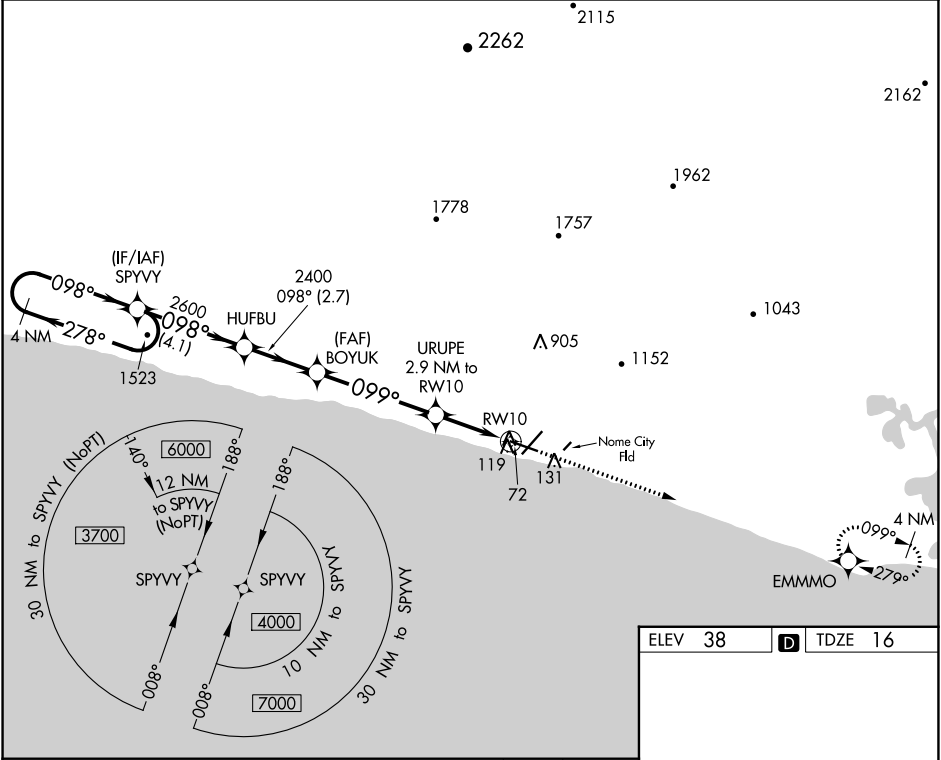
23222

WAAS CH <b>40434</b> <b>W10A</b>	APP CRS <b>099°</b>	Rwy Idg <b>6009</b> TDZE <b>16</b> Apt Elev <b>38</b>
--	------------------------	---

# RNAV (GPS) RWY 10

NOME (OME)(PAOM)

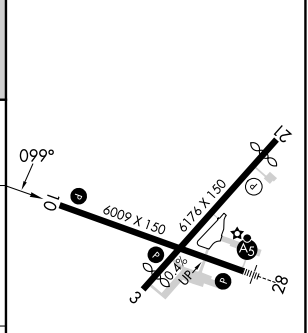
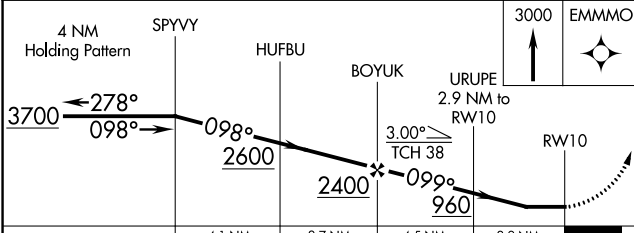
<p><b>▽</b> DME/DME RNP-0.3 NA. Helicopter visibility reduction below 1 SM NA. Night Landing: Rwy 21 NA, Rwy 10 operational VGSI required, remain on or above VGSI glidepath until threshold. Circling NA for Cats C and D north of Rwy 10-28.</p>		MISSED APPROACH: Climb to 3000 direct EMMMO and hold.
AFIS <b>119.925</b>	ANCHORAGE CENTER <b>133.3 290.4</b>	NOME RADIO <b>123.6 (CTAF) 1</b>



AK, 31 OCT 2024 to 26 DEC 2024

AK, 31 OCT 2024 to 26 DEC 2024

ELEV 38	<b>D</b> TDZE 16
---------	------------------



CATEGORY	A	B	C	D
LP MDA		340-1	324 (400-1)	
LNAV MDA		380-1	364 (400-1)	
<b>C</b> CIRCLING	540-1	502 (600-1)	540-1½ 502 (600-1½)	700-2 662 (700-2)

REIL Rwy 3 and 10 **1**  
 HIRL Rwy 10-28 **1**  
 MIRL Rwy 3-21 **1**

NOME, ALASKA  
 Amdt 2 13NOV14

64°31'N-165°27'W

# RNAV (GPS) RWY 10