

LOC/DME I-OME <b>108.7</b> Chan <b>24</b>	APP CRS <b>099°</b>	Rwy Idg <b>6009</b> TDZE <b>16</b> Apt Elev <b>38</b>
---	------------------------	---

# LOC/DME BC RWY 10

NOME (OME) (PAOM)

**LOC BC unusable inside TOGGU/I-OME 1 DME. Night landing:**  
Rwy 10 operational VGSi required, remain on or above VGSi glidepath until threshold. Night landing: Rwy 21 NA. Circling NA for Cats C and D north of Rwy 10-28.

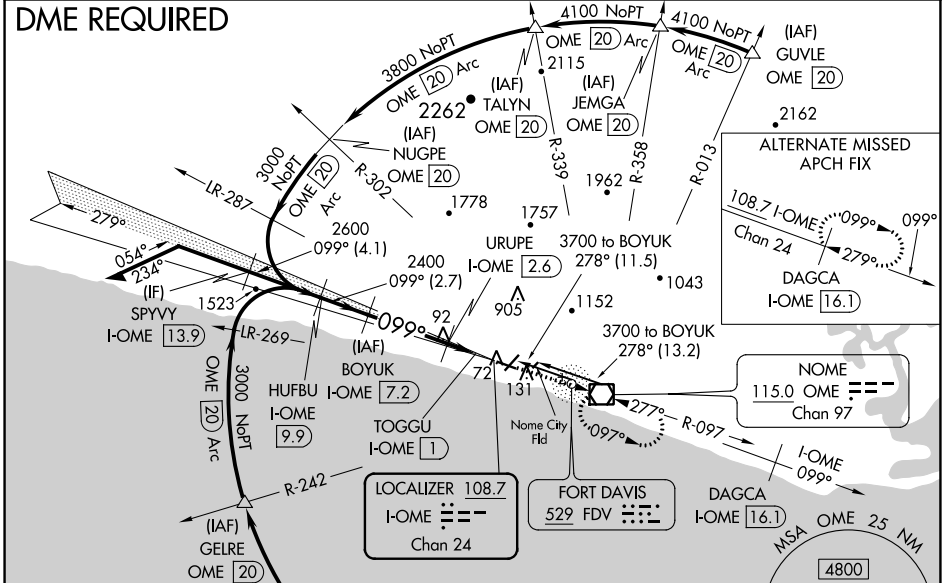
**MISSED APPROACH:** Climb to 3000 direct OME VOR/DME and hold, continue climb-in-hold to 3000.

AFIS  
**119.925**

ANCHORAGE CENTER  
**133.3 290.4**

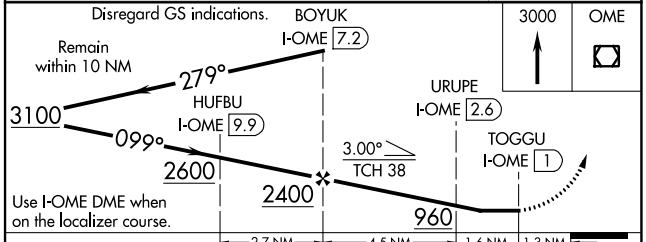
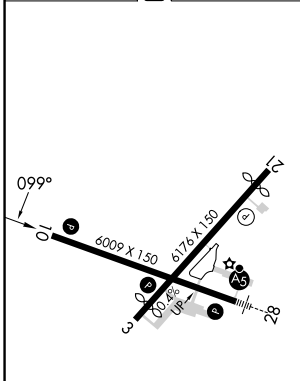
NOME RADIO  
**123.6** (CTAF) **1**

## DME REQUIRED



## BACK COURSE

ELEV 38 TDZE 16



CATEGORY	A	B	C	D
S-10		340-1½	324 (400-1½)	
<b>C</b> CIRCLING		540-1½	502 (600-1½)	700-2 662 (700-2)

MIRL Rwy 3-21 **1**  
HIRL Rwy 10-28 **1**  
REIL Rwy 3 and 10 **1**

AK, 31 OCT 2024 to 26 DEC 2024

AK, 31 OCT 2024 to 26 DEC 2024