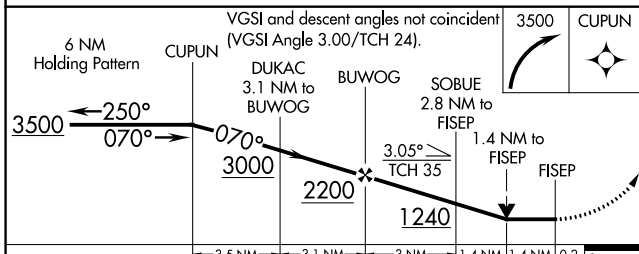
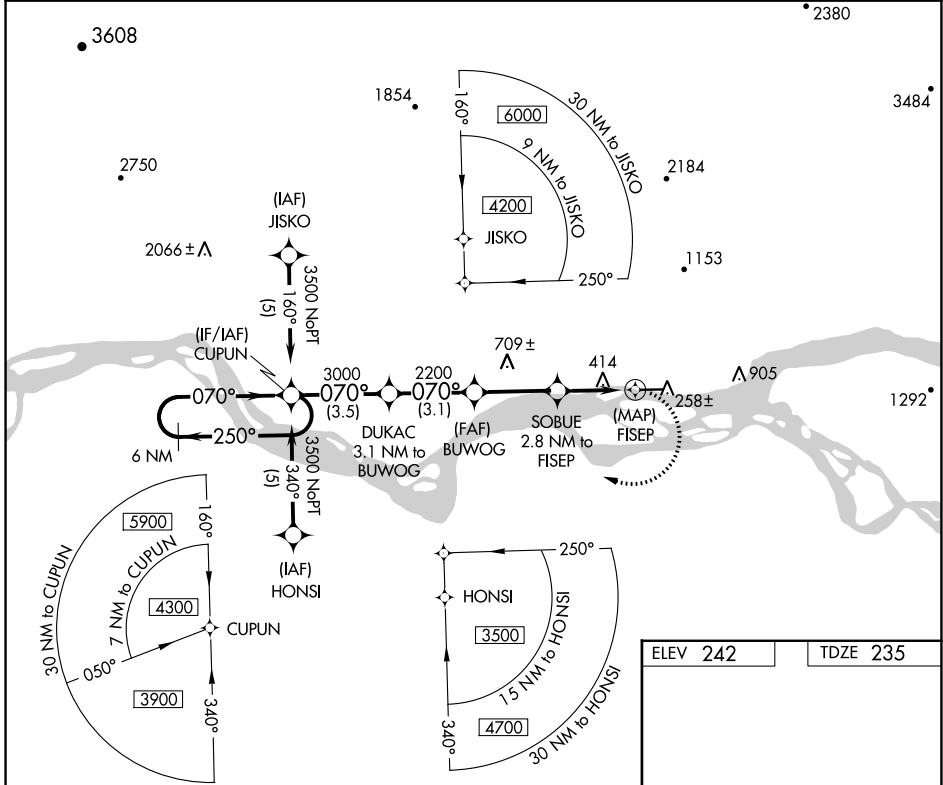


APP CRS	Rwy Idg	4400
070°	TDZE	235
	Apt Elev	242

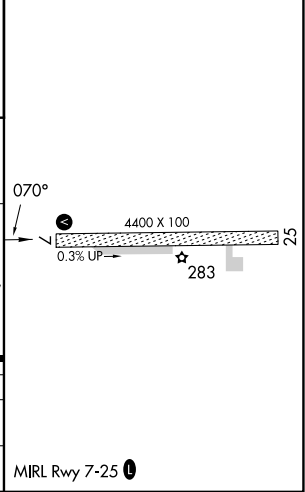
RNAV (GPS) RWY 7

RALPH M CALHOUN MEML (TAL) (PATA)

RNP APCH-GPS.		MISSED APPROACH: Climbing right turn to 3500 direct CUPUN and hold.	
<p>▼ Circling NA north of Rwy 7-25. ▲ Rwy 7 helicopter visibility reduction below 3/4 SM NA.</p>		ASOS	ANCHORAGE CENTER
		135.1	120.9 285.4
		FAIRBANKS RADIO	CTAF
		122.65	122.90



ELEV 242	TDZE 235
----------	----------



CATEGORY	A	B	C	D
LNVA MDA	760-1 525 (600-1)		760-1 1/2 525 (600-1 1/2)	
CIRCLING	760-1 518 (600-1)		1260-3 1018 (1100-3)	

AK, 05 SEP 2024 to 31 OCT 2024

AK, 05 SEP 2024 to 31 OCT 2024