

TACAN Y RWY 16

TACAN EDF Chan 81	APCH CRS 133°	Rwy Idg TDZE Arprt Elev 7493 213 213
-----------------------------	-------------------------	--

[USAF]

ELMENDORF AFB (PAED)

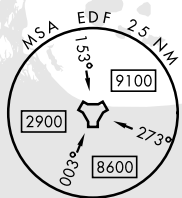
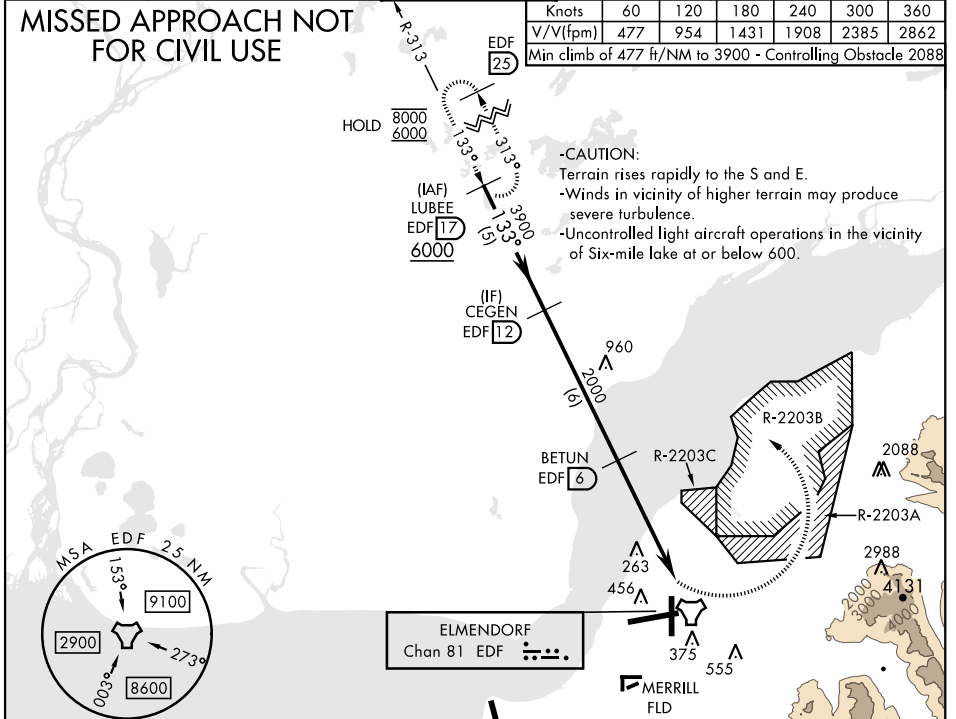
⚠ * Circling not authorized SW of Rwy 6 and 34. CAT E aircraft remain within 4.5 NM of runway when executing circling maneuver.

MISSED APPROACH: Climbing left turn to 6000 via EDF R-313 to LUBEE and hold. Continue climb-in-hold to 6000.

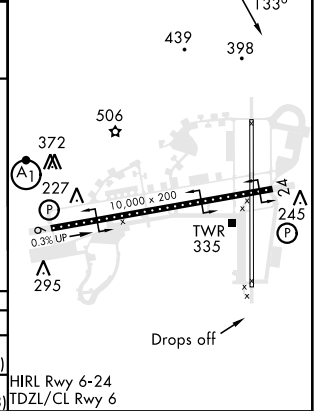
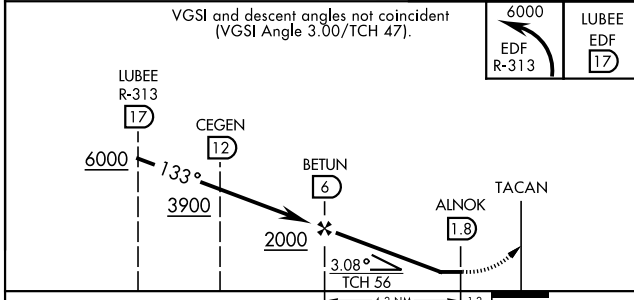
ATIS ★ 124.3 273.5	ANCHORAGE APP CON 118.6 290.5 (N) 123.8 259.3 (S)	TOWER 127.2 352.05	GND CON 121.8 275.8	CLNC DEL 128.8 306.925	PAR
------------------------------	---	------------------------------	-------------------------------	----------------------------------	-----

MISSED APPROACH NOT FOR CIVIL USE

Knots	60	120	180	240	300	360
V/V(fpm)	477	954	1431	1908	2385	2862
Min climb of 477 ft/NM to 3900 - Controlling Obstacle 2088						



EMERG SAFE ALT 100 NM 15,300	ANCHORAGE INTL	ELEV 213	TDZE 213
------------------------------	----------------	----------	----------



CATEGORY	A	B	C	D	E
S-16	NOT AUTHORIZED				
CIRCLING*	NOT AUTHORIZED				
	680-1 3/8 467 (500-1 3/8)				
	1480-3 1267 (1300-3)				

TACAN Y RWY 16

AK, 31 OCT 2024 to 26 DEC 2024

AK, 31 OCT 2024 to 26 DEC 2024