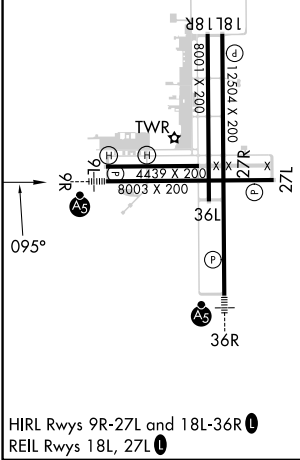
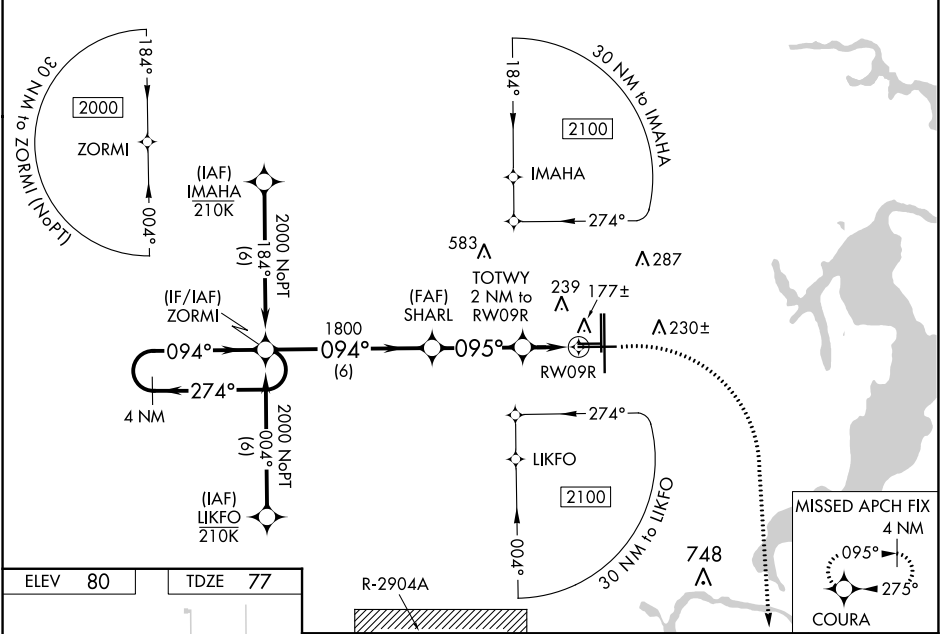


WAAS CH 50516 W09A	APP CRS 095°	Rwy Idg 8003 TDZE 77 Apt Elev 80
--	------------------------	---

RNAV (GPS) RWY 9R

CECIL (VQQ)

<p>▼ Baro-VNAV NA when using Jacksonville Intl altimeter setting. For uncompensated Baro-VNAV systems, LNAV/VNAV NA below -15°C (5°F) or above 54°C (130°F). DME/DME RNP-0.3 NA.</p> <p>▲ Helicopter visibility reduction below 3/4 SM NA. When local altimeter setting not received, use Jacksonville Intl altimeter setting and increase all DA 52 feet and all MDA 60 feet. For inop MALSR, increase LPV and LNAV/VNAV all Cats visibility to 7/8 mile, and LNAV all Cats visibility to 1 mile. For inop MALSR, when using Jacksonville Intl altimeter setting, increase LPV all Cats visibility to 1 mile, LNAV/VNAV all Cats visibility to 1 mile, and LNAV Cats C/D visibility to 1 1/8 mile.</p>		<p>MALSR</p>	<p>MISSED APPROACH: Climb to 700 then climbing right turn to 2000 direct COURA and hold.</p>		
ATIS 125.275	JACKSONVILLE APP CON 127.775 377.075	CECIL TOWER* 126.1 (CTAF) 235.625	GND CON 121.625 226.675	CINC DEL 123.975 254.25	GCO 135.075



ELEV 80	TDZE 77	R-2904A		
<p>4 NM Holding Pattern</p> <p>ZORMI</p> <p>GP 3.00° TCH 53</p>		<p>VGSI and RNAV glidepath not coincident (VGSI Angle 3.00/TCH 68).</p> <p>700</p> <p>2000</p> <p>COURA</p>		
<p>2000 ← 274°</p> <p>094° →</p>		<p>SHARL</p> <p>TOTWY 2 NM to RWY 9R</p> <p>*LNAV only.</p> <p>*0.9 NM to RWY 9R</p> <p>RWY 9R</p>		
<p>1800</p> <p>094°</p>		<p>095°</p> <p>*760</p>		
<p>6 NM</p>		<p>3.3 NM</p>		
<p>1.1</p>		<p>0.9</p>		
CATEGORY	A	B	C	D
LPV DA		351-3/4	274 (300-3/4)	
LNAV/VNAV DA		338-3/4	261 (300-3/4)	
LNAV MDA		440-3/4	363 (400-3/4)	
CIRCLING	540-1	560-1	600-1 1/2	640-2
	460 (500-1)	480 (500-1)	520 (600-1 1/2)	560 (600-2)

SE-3, 31 OCT 2024 to 28 NOV 2024

SE-3, 31 OCT 2024 to 28 NOV 2024