

TACAN FOK Chan 47 (111.0)	APP CRS 230°	Rwy Idg TDZE 66 Apt Elev 66	9002
---------------------------------	-----------------	---	-------------

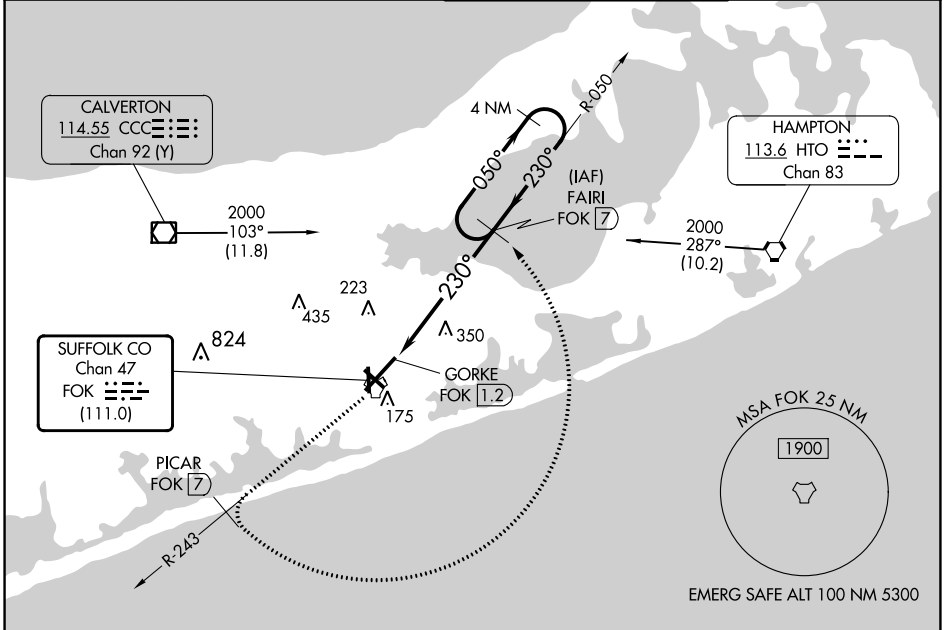
TACAN RWY 24

FRANCIS S GABRESKI (F'OK)

VDP NA with Shirley altimeter setting. When local altimeter setting not received, use Shirley altimeter setting and increase all MDAs 40 feet and S-24 Cat C/D visibility 1/2 SM and Circling Cat C visibility 1/4 SM. Circling Rwy 15 NA at night.

MALSRS
MISSED APPROACH: Climb to 2000 on FOK TACAN R-243 to PICAR/7 DME then arc CCW to FAIRI/7 DME and hold.

ASOS 119.925	NEW YORK APP CON 125.975 343.65	SUFFOLK COUNTY TOWER ★ 125.3 (CTAF) 236.6	GND CON 121.8 225.4
------------------------	---	---	-------------------------------



NE-2, 31 OCT 2024 to 28 NOV 2024

NE-2, 31 OCT 2024 to 28 NOV 2024

ELEV 66	TDZE 66
---------	---------

The diagram shows the approach path with a 230° heading. Key altitudes include 2000 ft, 175 ft, and 150 ft. It also shows a 3.06° TCH 55.

	2000 ↑ FOK R-243	PICAR FOK (7)	Arc CCW	FAIRI FOK (7)	VGSI and descent angles not coincident (VGSI Angle 3.00/TCH 77).	
					FAIRI FOK (7) 4 NM Holding Pattern	
		FOK TACAN			2000	
		GORKE FOK (1.2)			050° →	
					← 230°	
					3.06° TCH 55	
					1.6 NM 4.2 NM	
CATEGORY	A		B		C	D
S-24	660-1/2		594 (600-1/2)		660-1 1/4	594 (600-1 1/4)
CIRCLING	660-1		594 (600-1)		700-1 3/4 634 (700-1 3/4)	740-2 1/4 674 (700-2 1/4)