

WAAS CH 81822 W06A	APP CRS 055°	Rwy Idg TDZE Apt Elev	9002 57 66
--	------------------------	-----------------------------	---------------------------------------

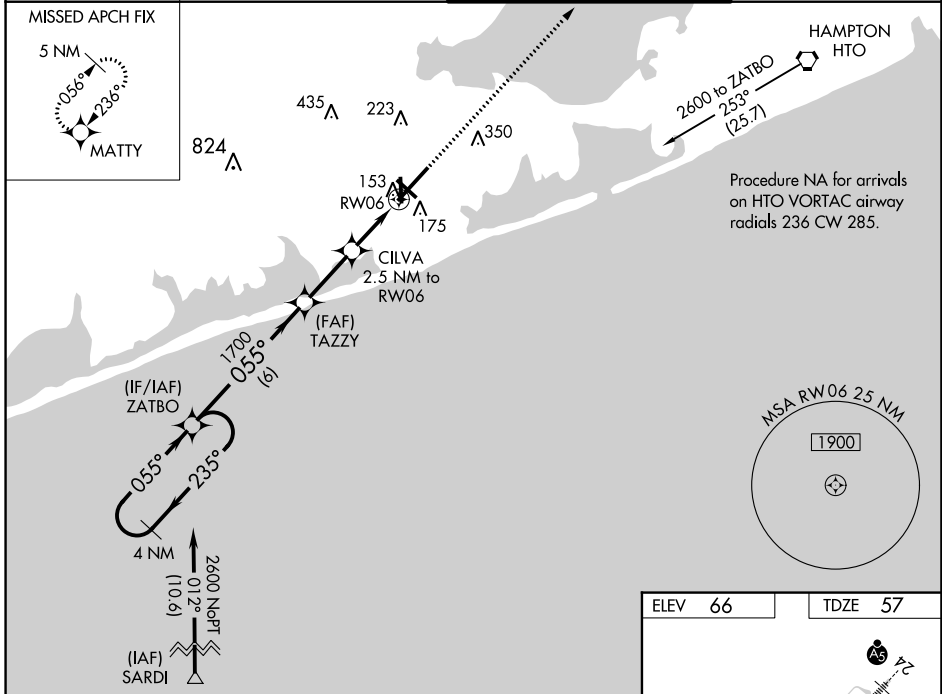
RNAV (GPS) RWY 6

FRANCIS S GABRESKI (F'OK)

⚠ Helicopter visibility reduction below $\frac{3}{4}$ SM not authorized. For uncompensated Baro-VNAV systems, LNAV/VNAV NA below -15°C (5°F) or above 43°C (109°F). DME/DME RNP-0.3 NA. When local altimeter setting not received, use Shirley altimeter setting: increase LPV DA to 325 feet and all Cats visibility $\frac{1}{8}$ SM; increase LNAV/VNAV DA to 361 feet and all Cats visibility $\frac{1}{8}$ SM; increase all MDAs 40 feet and LNAV Cats C/D visibility $\frac{1}{8}$ SM and Circling Cat C visibility $\frac{1}{4}$ SM. Baro-VNAV and VDP NA when using Shirley altimeter setting. Circling Rwy 15 NA at night.

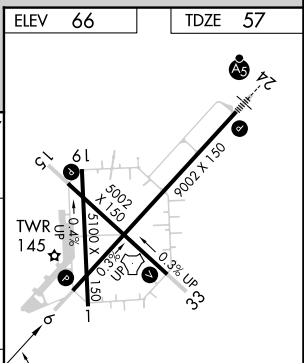
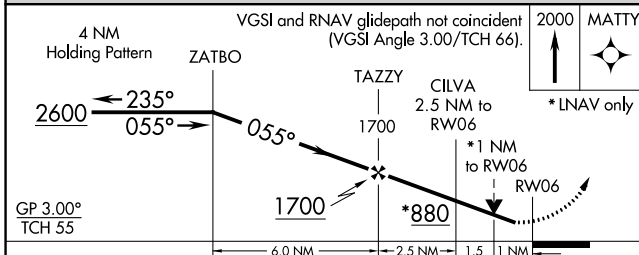
MISSED APPROACH:
Climb to 2000 direct
MATTY and hold.

ASOS 119.925	NEW YORK APP CON 125.975 343.65	SUFFOLK COUNTY TOWER * 125.3 (CTAF) 0 236.6	GND CON 121.8 225.4
------------------------	---	---	-------------------------------



NE-2, 31 OCT 2024 to 28 NOV 2024

NE-2, 31 OCT 2024 to 28 NOV 2024



CATEGORY	GP 3.00° TCH 55			
	A	B	C	D
	LPV DA	307- $\frac{3}{4}$ 250 (300- $\frac{3}{4}$)		
	LNAV/VNAV DA	343- $\frac{7}{8}$ 286 (300- $\frac{7}{8}$)		
	LNAV MDA	420-1 363 (400-1)		
CIRCLING	600-1	620-1	700-1 $\frac{3}{4}$	740-2 $\frac{1}{4}$
	534 (600-1)	554 (600-1)	634 (700-1 $\frac{3}{4}$)	674 (700-2 $\frac{1}{4}$)

ELEV 66 TDZE 57

HIRL Rwy 6-24 **1**
MIRL Rwy 15-33 **1**
REIL Rwy 6, 15, and 33 **1**