

VOR/DME GDM 116.95 Chan 116 (Y)	APP CRS 292°	Rwy Idg TDZE Apt Elev N/A 556
---	------------------------	--

VOR-A

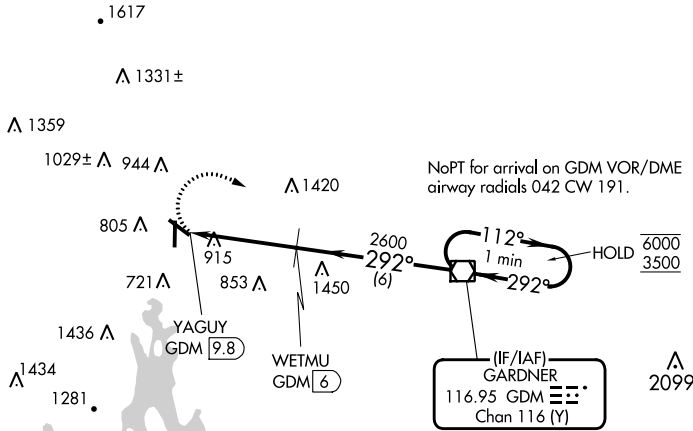
ORANGE MUNI(OR)E

DME required.

▼ Rwy 1, 19 helicopter visibility reduction below 1 SM NA. When local altimeter setting not received, use Keene altimeter setting and increase all MDAs 60 feet and Cat B visibility ¼ SM. Circling NA for Cats C/D to Rws 14 and 32. Circling Rwy 1, 19 NA at night.

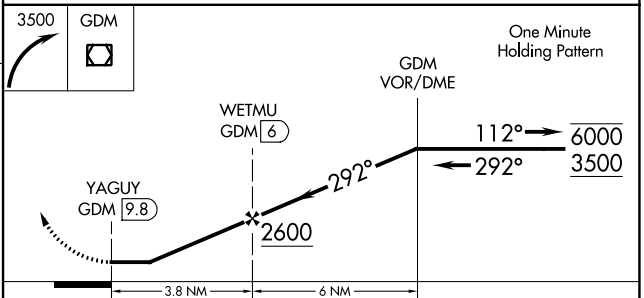
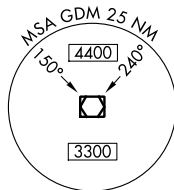
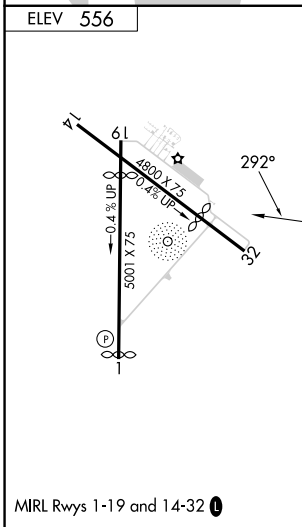
MISSED APPROACH: Climbing right turn to 3500 direct GDM VOR/DME and hold, continue climb-in-hold to 3500.

ASOS 135.675	BOSTON CENTER 123.75 338.2	UNICOM 122.8 (CTAF) 0
------------------------	--------------------------------------	---------------------------------



NE-1, 03 OCT 2024 to 31 OCT 2024

NE-1, 03 OCT 2024 to 31 OCT 2024



CATEGORY	A	B	C	D
<input checked="" type="checkbox"/> CIRCLING	1460-1¼	904 (1000-1¼)	1640-3 1084 (1100-3)	1740-3 1184 (1200-3)