

WAAS CH 87027 W32A	APP CRS 322°	Rwy Idg TDZE 545 Apt Elev 556	3510
--	------------------------	---	-------------

RNAV (GPS) RWY 32

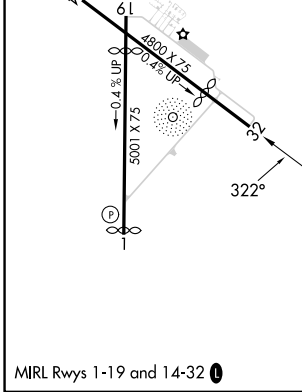
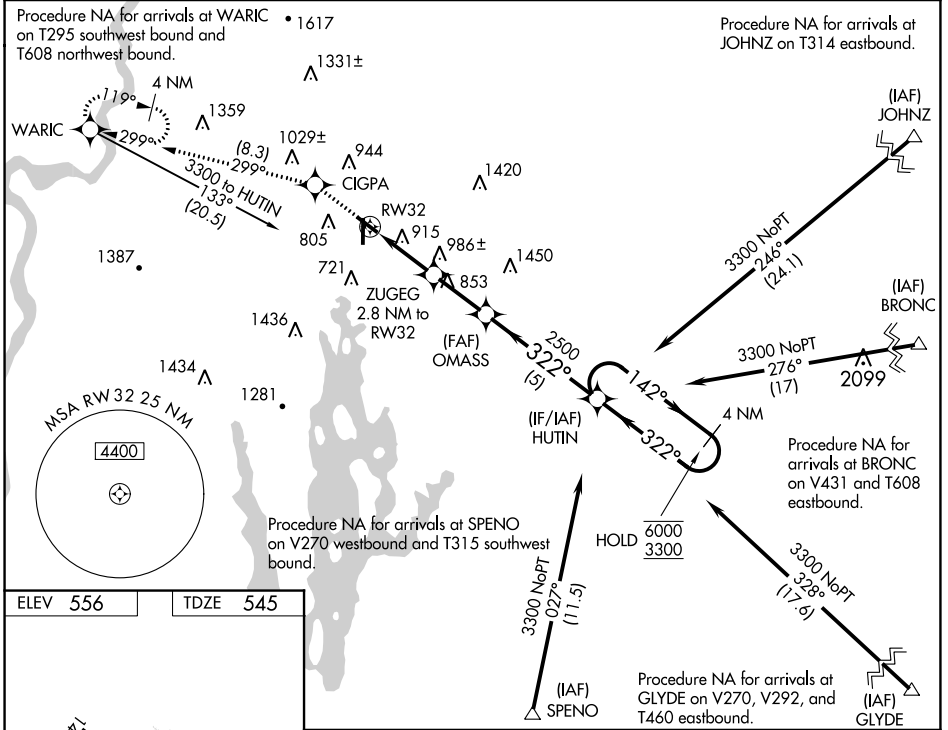
ORANGE MUNI (O.R.E.)

RNP APCH - GPS.

For uncompensated Baro-VNAV systems, LNAV/VNAV NA below -16°C or above 54°C. Rwy 32 helicopter visibility reduction below 3/4 SM NA. Circling Rwy 1, 19 NA at night. Baro-VNAV and VDP NA when using Keene altimeter setting. When local altimeter setting not received, use Keene altimeter setting and increase LPV DA to 928 and all visibilities 1/8 SM, LNAV/VNAV DA to 1343 and all visibilities 1/2 SM, and all MDAs 60 feet and LNAV visibility Cat B 1/4 SM, and Circling visibility Cat B 1/2 SM.

MISSED APPROACH: Climb to 3500 direct CIGPA and on track 299° to WARIC and hold, continue climb-in-hold to 3500.

ASOS 135.675	BOSTON CENTER 123.75 338.2	UNICOM 122.8 (CTAF) 0
-------------------------------	---	--



3500	CIGPA	WARIC	4 NM Holding Pattern	
↑	(M)	(M)	HUTIN	
	tr 299°		142° → 6000	← 322° 3300
		ZUGEG 2.8 NM to RW32	OMASS 2500	
		1.7 NM to RW32	322°	
		1.1 NM	1600	2500
		2.3 NM		
		5 NM		
GP 3.50° TCH 45				
CATEGORY	A	B	C	D
LPV DA	873-1	328 (400-1)		NA
LNAV/VNAV DA	1288-2	743 (800-2)		NA
LNAV MDA	1240-1	695 (700-1)		NA
CIRCLING	1260-1 704 (800-1)	1320-1 764 (800-1)		NA

NE-1, 03 OCT 2024 to 31 OCT 2024

NE-1, 03 OCT 2024 to 31 OCT 2024