

WAAS CH <b>56209</b> <b>W01A</b>	APP CRS <b>004°</b>	Rwy Idg TDZE <b>5992</b> <b>140</b> Apt Elev <b>141</b>
--	------------------------	--

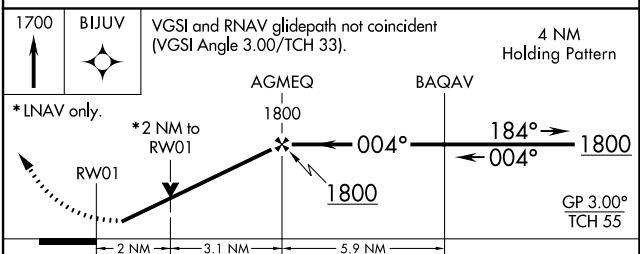
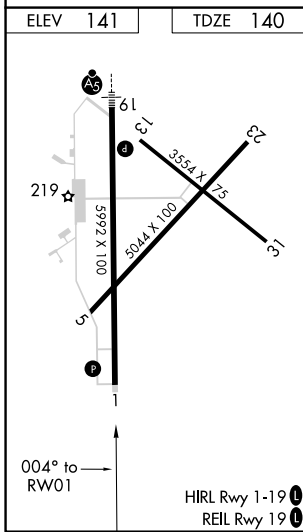
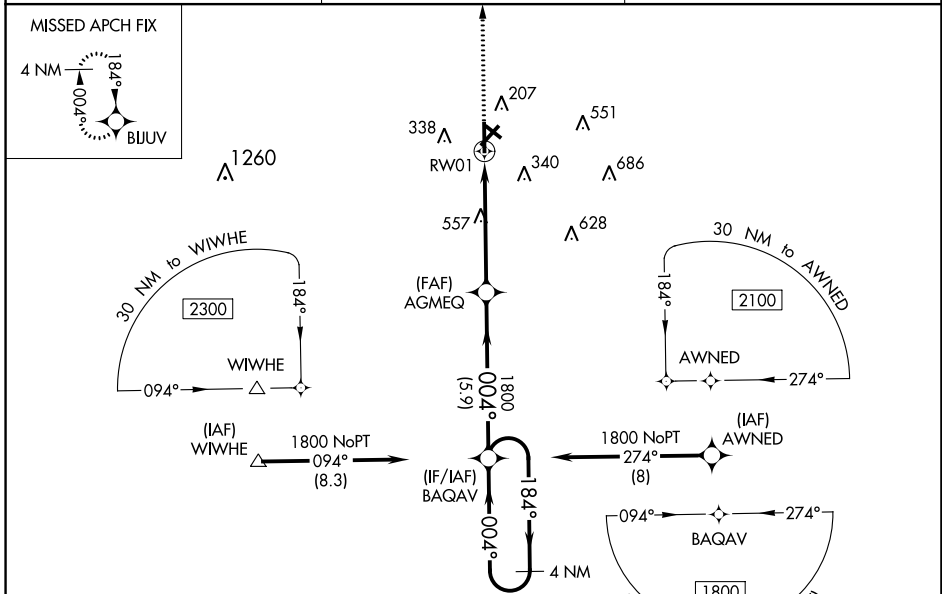
# RNAV (GPS) RWY 1

WAYCROSS-WARE COUNTY (A.Y.S)

**⚠** DME/DME RNP-0.3 NA. When local altimeter setting not received, use Alma altimeter setting and increase LPV DA to 473 feet and all visibilities  $\frac{1}{8}$  mile, LNAV/VNAV DA to 462 feet and all visibilities  $\frac{1}{8}$  mile; increase all MDA 60 feet and visibility Cats C and D  $\frac{1}{8}$  mile and Circling Cats C and D visibilities  $\frac{1}{4}$  mile. For uncompensated Baro-VNAV systems, LNAV/VNAV NA below -15°C (5°F) or above 54°C (130°F). Night Landing Rwy 5, 31 NA. VDP and Baro-VNAV NA when using Alma altimeter setting. Helicopter visibility reduction below  $\frac{3}{4}$  SM NA.

**⚠** MISSED APPROACH: Climb to 1700 direct BIJUV and hold.

AWOS-3 <b>118.575</b>	JACKSONVILLE CENTER <b>127.575 269.025</b>	UNICOM <b>122.8 (CTAF) 0</b>
--------------------------	---	---------------------------------



CATEGORY	A	B	C	D
LPV DA		423- $\frac{7}{8}$	283 (300- $\frac{7}{8}$ )	
LNAV/VNAV DA		412- $\frac{7}{8}$	272 (300- $\frac{7}{8}$ )	
LNAV MDA	820-1	680 (700-1)	820-1 $\frac{7}{8}$	680 (700-1 $\frac{7}{8}$ )
<b>CIRCLING</b>	820-1	679 (700-1)	860-2 719 (800-2)	860-2 $\frac{1}{4}$ 719 (800-2 $\frac{1}{4}$ )

SE-4, 28 NOV 2024 to 26 DEC 2024

SE-4, 28 NOV 2024 to 26 DEC 2024