

WAAS CH 63019 W19A	APP CRS 196°	Rwy Idg 10302 TDZE 1330 Apt Elev 1333
----------------------------------------	------------------------	------------------------------------------------------------------

RNAV (GPS) Y RWY 19R

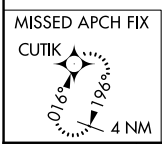
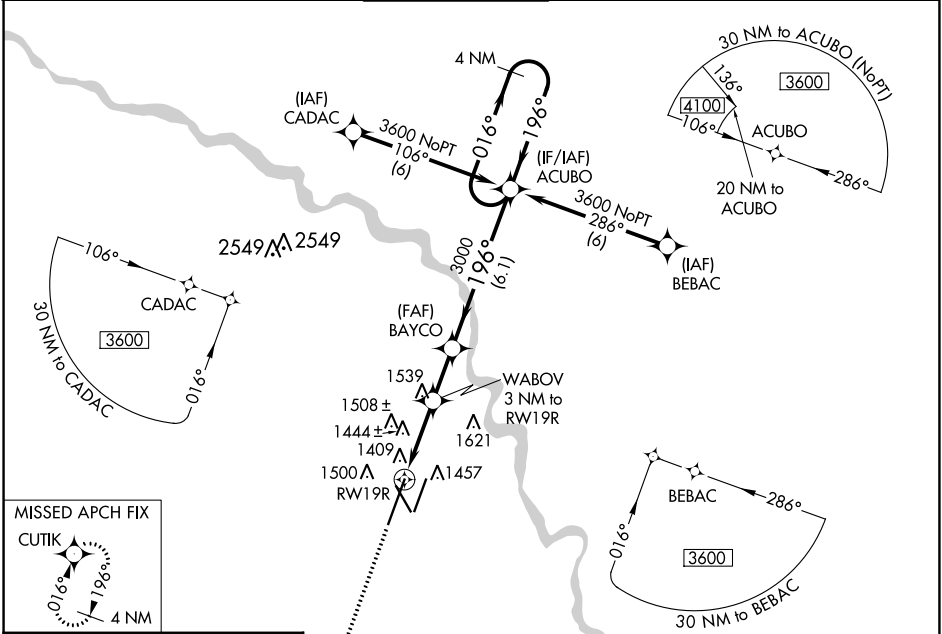
WICHITA DWIGHT D EISENHOWER NTL (ICT)

▼ For uncompensated Baro-VNAV systems, LNAV/VNAV NA below -15°C (5°F) or above 54°C (130°F). DME/DME RNP-0.3 NA. For inoperative MALSR, increase LNAV Cat C/D visibility to RVR 6000. # RVR 1800 authorized with use of FD or AP or HUD to DA.

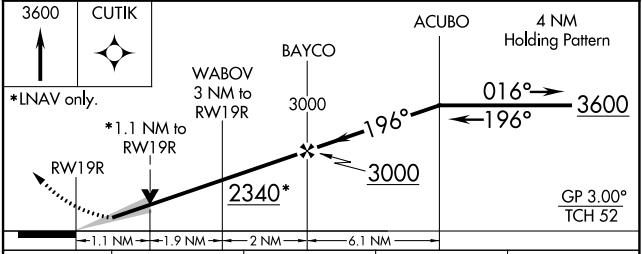
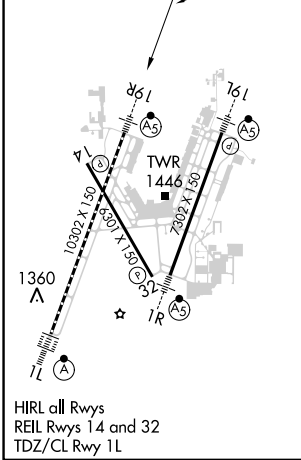
MALSR

MISSED APPROACH: Climb to 3600 direct CUTIK and hold.

ATIS 125.15	WICHITA APP CON 126.7 353.5	WICHITA TOWER 118.2 257.8	GND CON 121.9 348.6	CLNC DEL 125.7
-----------------------	---------------------------------------	-------------------------------------	-------------------------------	--------------------------



ELEV 1333	D	TDZE 1330
-----------	----------	-----------



CATEGORY	A	B	C	D
LPV DA #	1530/24 200 (200-½)			
LNAV/VNAV DA	1742/45 412 (500-¾)			
LNAV MDA	1740/24	410 (500-½)	1740/40	410 (500-¾)
C CIRCLING	1800-1	467 (500-1)	1980-1¾ 647 (700-1¾)	1980-2 647 (700-2)

NC-2, 03 OCT 2024 to 31 OCT 2024

NC-2, 03 OCT 2024 to 31 OCT 2024