

APP CRS	Rwy Idg	10302
196°	TDZE	1330
	Apt Elev	1333

RNAV (RNP) Z RWY 19R

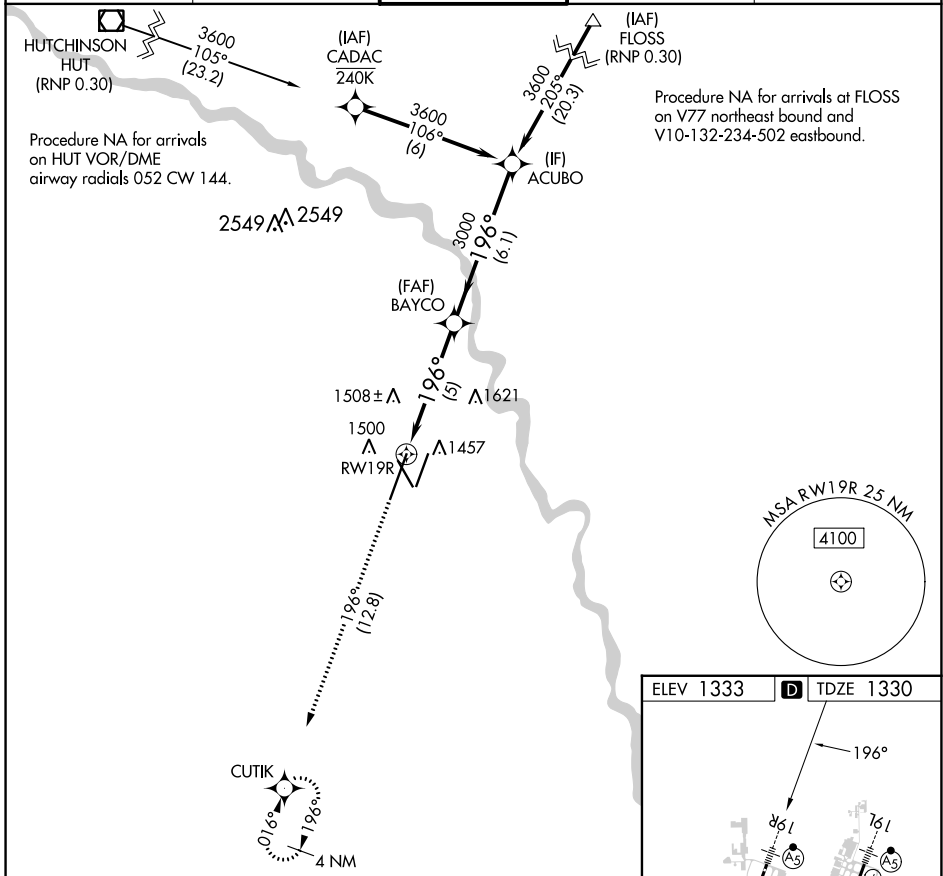
WICHITA DWIGHT D EISENHOWER NTL (ICT)

▼ For uncompensated Baro-VNAV systems, procedure NA below -15°C (5°F) or above 54°C (130°F). For inoperative MALS, increase all Cats visibility to 1 ¼ mile. GPS required.

MALS

MISSED APPROACH: Climb to 4200 on track 196° to CUTIK and hold.

ATIS 125.15	WICHITA APP CON 126.7 353.5	WICHITA TOWER 118.2 257.8	GND CON 121.9 348.6	CLNC DEL 125.7
-----------------------	---------------------------------------	-------------------------------------	-------------------------------	--------------------------



NC-2, 03 OCT 2024 to 31 OCT 2024

NC-2, 03 OCT 2024 to 31 OCT 2024

4200	CUTIK	BAYCO	ACUBO
↑ tr 196°	✧	3000	3600
RW19R		3000	3600
		196°	3600
		3000	GP 3.00° TCH 52
CATEGORY	A	B	C
RNP 0.30 DA	1727/50		397 (400-1)
AUTHORIZATION REQUIRED			

