


WAAS CH <b>78400</b> <b>W14A</b>	APP CRS <b>137°</b>	Rwy Idg <b>6983</b> TDZE <b>107</b> Apt Elev <b>107</b>
--	------------------------	---

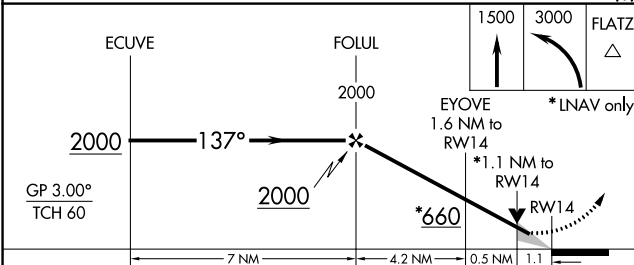
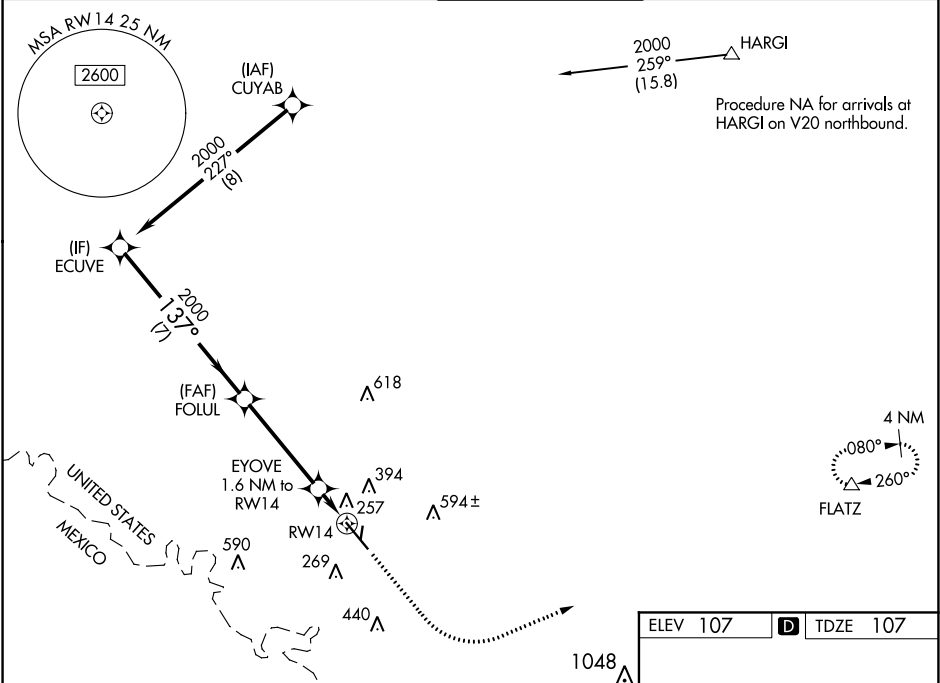
# RNAV (GPS) RWY 14

MC ALLEN MILLER INTL (MFE)

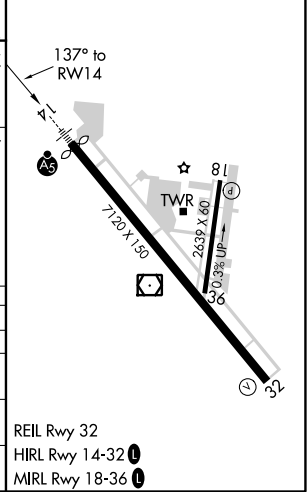
**⚠** For uncompensated Baro-VNAV systems, LNAV/VNAV NA below 1°C (34°F) or above 54°C (130°F). Circling NA northeast of Rwy 14-32. DME/DME RNP-0.3 NA. When local altimeter setting not received, use Weslaco altimeter setting: increase all DA 39 feet and LNAV/VNAV all Cat visibility 1/8 mile; increase all MDA 40 feet and LNAV Cat C/D visibility 1/8 mile. Baro-VNAV and VDP NA when using Weslaco altimeter setting.

**MALSRL**  
 MISSED APPROACH:  
 Climb to 1500 then climbing left turn to 3000 direct FLATZ and hold.

ATIS <b>128.5</b>	VALLEY APP CON <b>121.0 377.2</b>	MC ALLEN TOWER * <b>118.5 (CTAF) 256.9</b>	GND CON <b>121.8</b>	UNICOM <b>122.95</b>
----------------------	--------------------------------------	---	-------------------------	-------------------------



ELEV 107	<b>D</b> TDZE 107
----------	-------------------



CATEGORY	A	B	C	D
LPV DA		307-1/2	200 (200-1/2)	
LNAV/VNAV DA		418-1/2	311 (400-1/2)	
LNAV MDA	520-1/2	413 (500-1/2)	520-3/4	413 (500-3/4)
<b>C</b> CIRCLING	580-1	473 (500-1)	580-1 1/2 473 (500-1 1/2)	800-2 1/4 693 (700-2 1/4)

SC-3, 19 MAY 2022 to 16 JUN 2022

SC-3, 19 MAY 2022 to 16 JUN 2022