

APP CRS <b>027°</b>	Rwy Idg <b>3995</b>
	TDZE <b>805</b>
	Apt Elev <b>813</b>

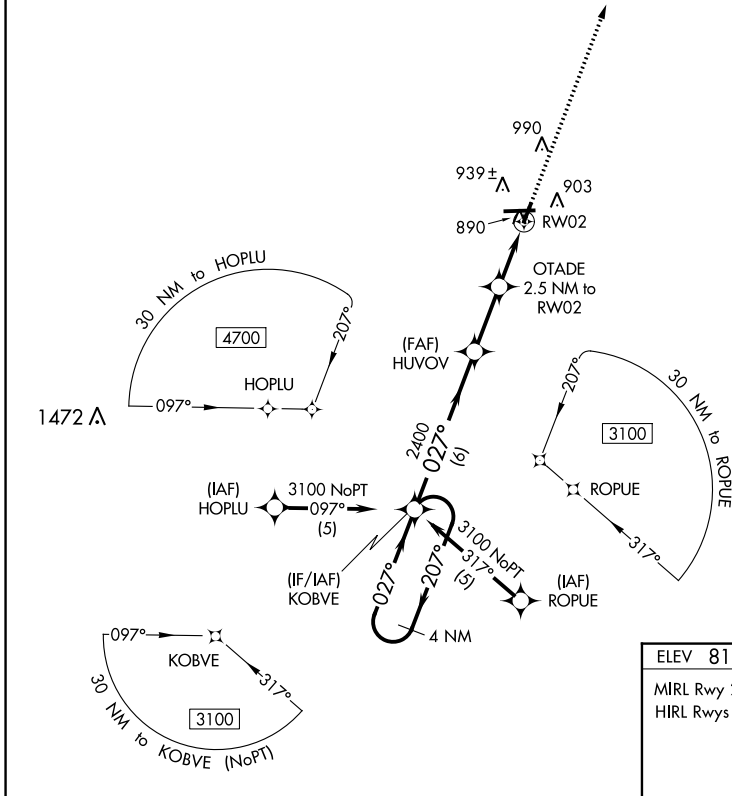
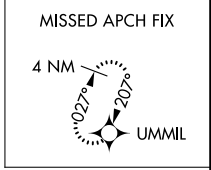
# RNAV (GPS) RWY 2

ATHENS/BEN EPPS (AHN)

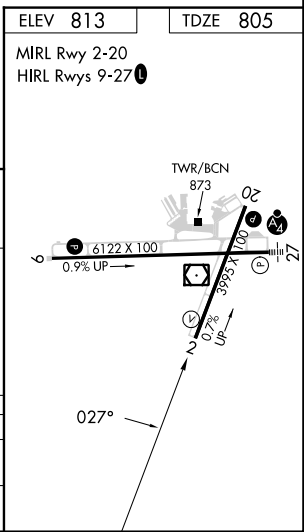
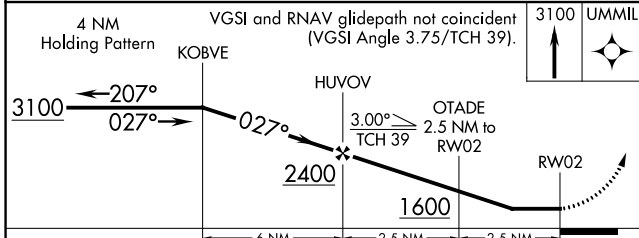
**▼** DME/DME RNP-0.3 NA. When local altimeter setting not received, use Winder altimeter setting and increase all MDA 60 feet; increase LNAV Cats C and D visibility 1/8 mile and increase Circling Cat D visibility 1/4 mile. Night landing: Rwy 2, 20 NA. Helicopter visibility reduction below 1 SM NA.

**MISSED APPROACH:**  
Climb to 3100 direct UMMIL and hold.

ASOS <b>132.875</b>	ATLANTA APP CON * <b>132.475 291.1</b>	ATHENS TOWER * <b>126.3 (CTAF) 0 338.275</b>	GND CON <b>121.8</b>	CLNC DEL <b>121.8</b>	CLNC DEL <b>132.475 291.1</b> (when twr closed)	UNICOM <b>122.95</b>
------------------------	-------------------------------------------	-------------------------------------------------	-------------------------	--------------------------	-------------------------------------------------------	-------------------------



ELEV 813	TDZE 805
MIRL Rwy 2-20	
HIRL Rwys 9-27	



CATEGORY	A	B	C	D
LNAV MDA	1140-1 335 (400-1)			
CIRCLING	1260-1 447 (500-1)	1280-1 467 (500-1)	1320-1½ 507 (600-1½)	1460-2 647 (700-2)

SE-4, 31 OCT 2024 to 28 NOV 2024

SE-4, 31 OCT 2024 to 28 NOV 2024