

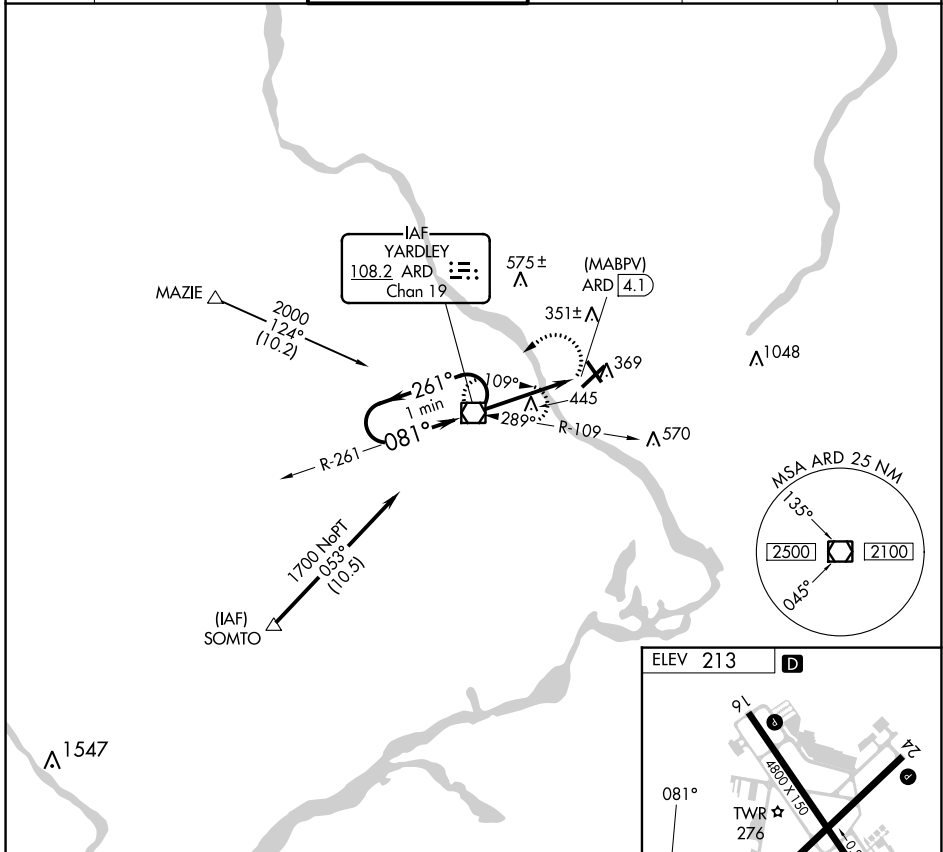
VOR/DME ARD <b>108.2</b> Chan <b>19</b>	APP CRS <b>081°</b>	Rwy Idg TDZE Apt Elev <b>N/A</b> <b>N/A</b> <b>213</b>
---	------------------------	---

# VOR or GPS-A

TRENTON MERCER (TTN)

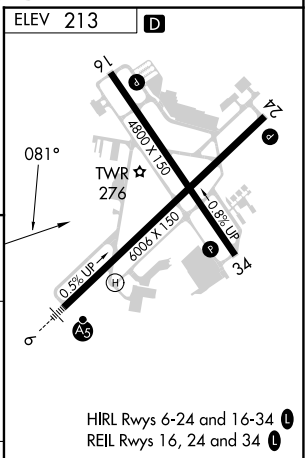
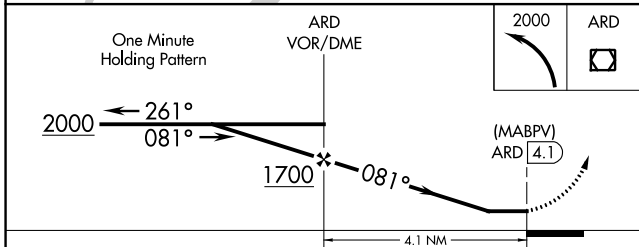
<b>▼</b> <b>▲</b>	Night Landing: Rwy 34 operational VGSI required, remain on or above VGSI glidepath until threshold.	MISSED APPROACH: Climbing left turn to 2000 direct ARD VOR/DME and hold.
----------------------	---	--

ATIS <b>126.775</b>	PHILADELPHIA APP CON <b>123.8 291.7</b>	TRENTON TOWER ★ <b>120.7 (CTAF) 257.8</b>	GND CON <b>121.9 257.8</b>	CLNC DEL <b>121.9 257.8</b>	UNICOM <b>122.95</b>
------------------------	--	--	-------------------------------	--------------------------------	-------------------------



NE-2, 08 AUG 2024 to 05 SEP 2024

NE-2, 08 AUG 2024 to 05 SEP 2024



CATEGORY	A	B	C	D	FAF to MAP 4.1 NM					
<b>C</b> CIRCLING	700-1	487 (500-1)	760-1½ 547 (600-1½)	960-2½ 747 (800-2½)	Knots	60	90	120	150	180
					Min:Sec	4:06	2:44	2:03	1:38	1:22