

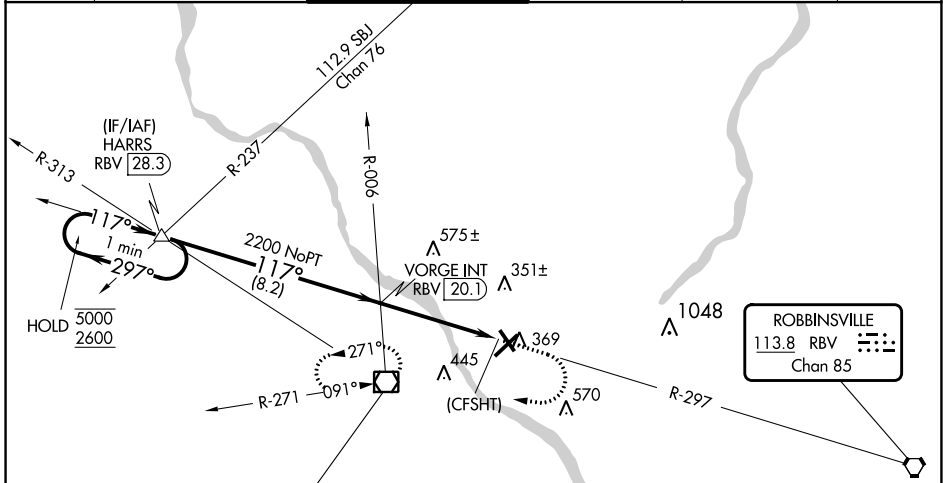
VORTAC RBV <b>113.8</b> Chan <b>85</b>	APP CRS <b>117°</b>	Rwy Idg TDZE Apt Elev	<b>N/A</b> <b>N/A</b> <b>213</b>
--	------------------------	-----------------------------	--

**VOR-A**  
TRENTON MERCER (TTN)

▼ Rwy 34 helicopter visibility reduction below 1 SM NA. When Circling to Rwy 34 at night, operational VGSJ required, remain at or above VGSJ glidepath until threshold. When local altimeter setting not received, use PNE altimeter setting and increase all MDAs 60 feet and visibility Cat C/D ¼ SM.

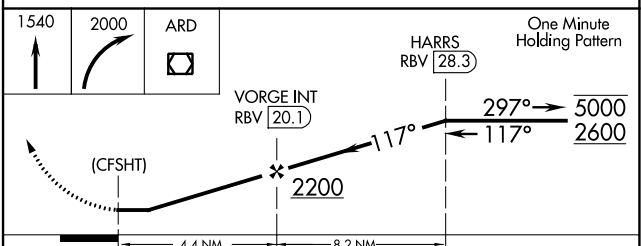
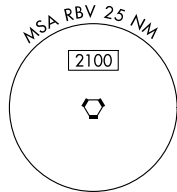
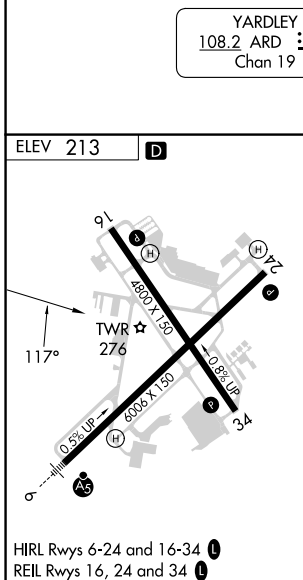
MISSED APPROACH: Climb to 1540 then climbing right turn to 2000 direct ARD VOR/DME and hold.

ATIS <b>126.775</b>	PHILADELPHIA APP CON <b>123.8 291.7</b>	TRENTON TOWER ★ <b>120.7 (CTAF) 257.8</b>	GND CON <b>121.9 257.8</b>	CLNC DEL <b>121.9 257.8</b>	UNICOM <b>122.95</b>
------------------------	--	--	-------------------------------	--------------------------------	-------------------------



NE-2, 31 OCT 2024 to 28 NOV 2024

NE-2, 31 OCT 2024 to 28 NOV 2024



FAF to MAP 4.4 NM					
Knots	60	90	120	150	180
Min:Sec	4:24	2:56	2:12	1:46	1:28
CATEGORY	A	B	C	D	
☑ CIRCLING	940-1	727 (800-1)	940-2 727 (800-2)	980-2½ 767 (800-2½)	