

WAAS CH 56430 W06A	APP CRS 058°	Rwy Idg TDZE 186 Apt Elev 213	6006
--	------------------------	---	-------------


RNAV (GPS) Z RWY 6

TRENTON MERCER (TTN)

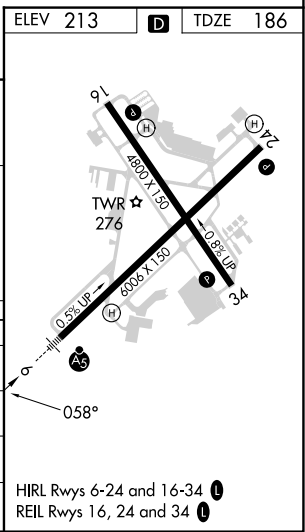
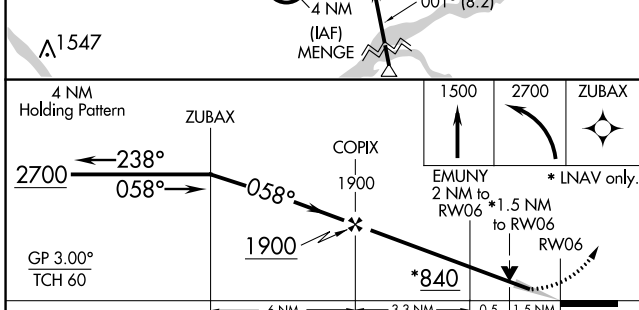
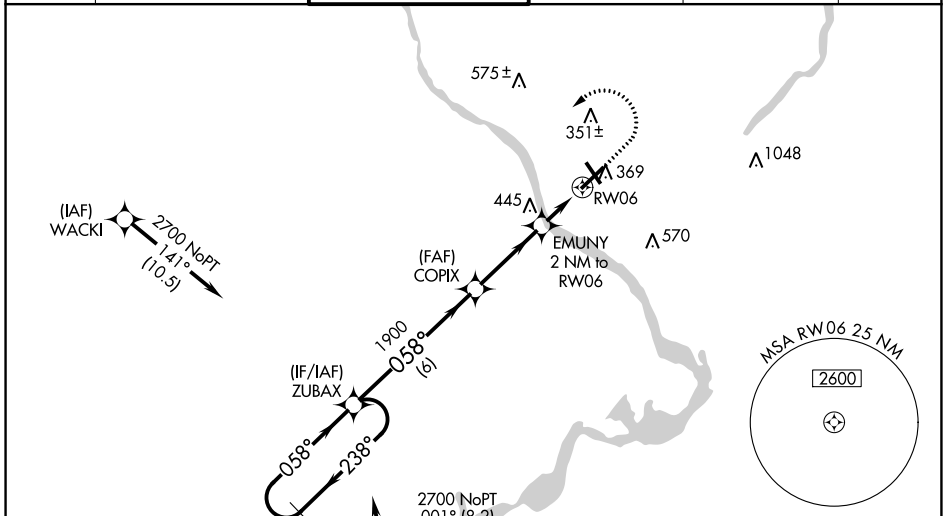
RNP APCH - GPS.

⚠ Baro-VNAV and VDP NA when using Northeast Philadelphia altimeter setting. For uncompensated Baro-VNAV systems, LNAV/VNAV NA below -13°C or above 54°C. When local altimeter setting not received, use Northeast Philadelphia altimeter setting and increase LPV DA to 437 feet; increase LNAV/VNAV DA to 658 feet and all visibilities ¼ SM; increase all MDAs 60 feet and LNAV visibility Cat C/D ¼ SM, and Circling visibility Cat C ¼ SM. For inop ALS, increase LNAV visibility Cats C/D to 1 ¾. For inop ALS when using Northeast Philadelphia altimeter setting, increase LNAV/VNAV all Cats visibility to 1 ¾ and LNAV visibility Cats C/D to 1 ¾. When Circling to Rwy 34 at night, operational VGSI required, remain on or above VGSI glidepath until threshold.

MALSR MISSED APPROACH: Climb to 1500 then climbing left turn to 2700 direct ZUBAX and hold.



ATIS 126.775	PHILADELPHIA APP CON 123.8 291.7	TRENTON TOWER ★ 120.7 (CTAF) 0 257.8	GND CON 121.9 257.8	CLNC DEL 121.9 257.8	UNICOM 122.95
------------------------	--	--	-------------------------------	--------------------------------	-------------------------



NE-2, 31 OCT 2024 to 28 NOV 2024

NE-2, 31 OCT 2024 to 28 NOV 2024