

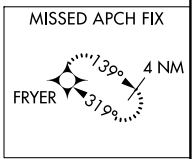
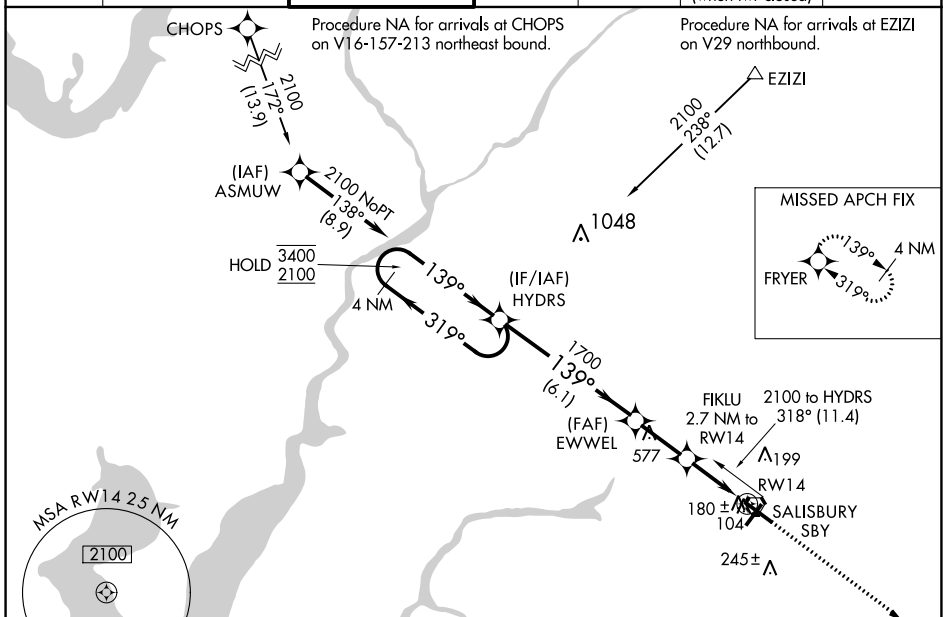
WAAS CH <b>56320</b> <b>W14A</b>	APP CRS <b>139°</b>	Rwy Idg TDZE Apt Elev	<b>6400</b> <b>49</b> <b>53</b>
--	------------------------	-----------------------------	---------------------------------------

# RNAV (GPS) RWY 14

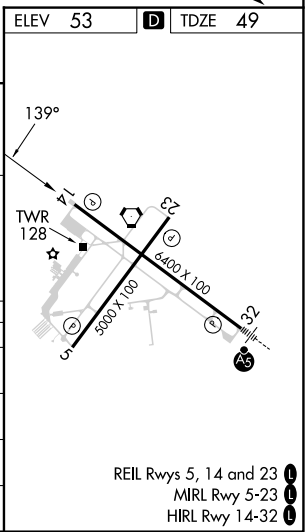
SALISBURY-OCEAN CITY WICOMICO RGNL (SBY)

RNP APCH.						MISSED APPROACH: Climb to 2000 direct FRYER and hold.
Rwy 14 helicopter visibility reduction below 3/4 SM NA. For uncompensated Baro-VNAV systems, LNAV/VNAV NA below -16° C or above 54° C.						

ASOS <b>118.325</b>	PATUXENT APP CON ★ <b>127.95 314.0</b>	SALISBURY TOWER ★ <b>119.425</b> (CTAF)	GND CON <b>123.775</b>	CLNC DEL <b>123.775</b>	CLNC DEL <b>118.55</b> (when twr closed)	UNICOM <b>122.95</b>
------------------------	---	--	---------------------------	----------------------------	--	-------------------------



4 NM Holding Pattern		HYDRS		EWWEL		FIKLU 2.7 NM to RW14		2000		FRYER	
3400 ← 319°		← 139° →		1700		*1.1 NM to RW14		↑			
2100				*940		RW14		*LNAV only			
GP 3.00°		1700									
TCH 45											
		6.1 NM		2.3 NM		1.6 NM		1.1 NM			
CATEGORY	A	B	C	D							
LPV DA	363-1 314 (400-1)										
LNAV/VNAV DA	453-1½ 404 (400-1½)										
LNAV MDA	440-1	391 (400-1)	440-1½	391 (400-1½)	440-1¼	391 (400-1¼)					
CIRCLING	480-1	520-1	560-1½	700-2	427 (500-1)	467 (500-1)	507 (600-1½)	647 (700-2)			



NE-3, 31 OCT 2024 to 28 NOV 2024

NE-3, 31 OCT 2024 to 28 NOV 2024