

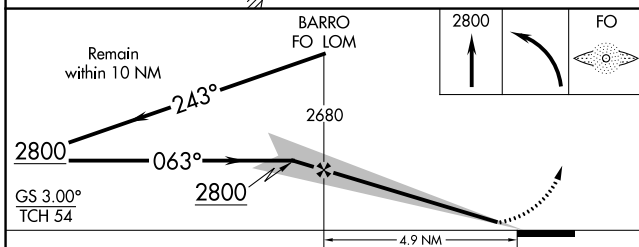
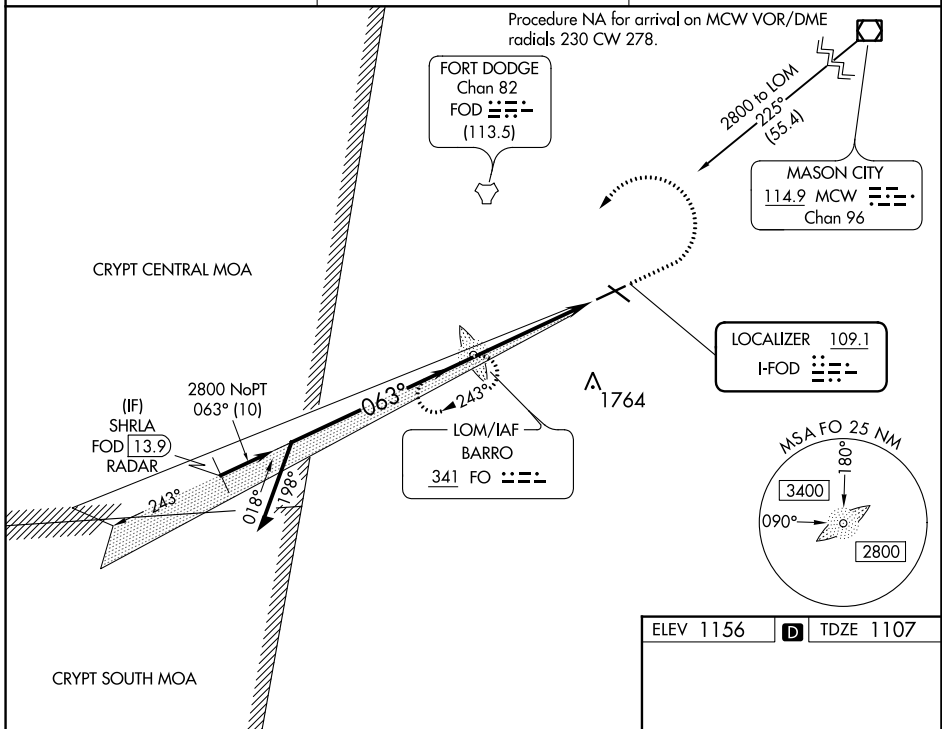
LOC I-FOD <b>109.1</b>	APP CRS <b>063°</b>	Rwy Idg <b>6547</b>
		TDZE <b>1107</b>
		Apt Elev <b>1156</b>

# ILS or LOC RWY 6

FORT DODGE RGNL (FOD)

ADF required. RADAR required for procedure entry at SHRLA.	MALSR 	MISSED APPROACH: Climb to 2800 then left turn direct BARRO LOM and hold.
NA DME from FOD DME. Simultaneous reception of I-FOD and FOD DME required. For inop ALS, increase S-LOC 6 Cat C/D visibility to 1 1/2 SM.		

AWOS-3PT <b>118.775</b>	MINNEAPOLIS CENTER <b>134.0 288.3</b>	UNICOM <b>123.0 (CTAF)</b>
----------------------------	--	-------------------------------



ELEV 1156		TDZE 1107			
MIRL Rwy 12-30					
REIL Rwy 12, 24 and 30					
HIRL Rwy 6-24					
FAF to MAP 4.9 NM					
Knots	60	90	120	150	180
Min:Sec	4:54	3:16	2:27	1:58	1:38

1.2% UP

6547 X 150

5301 X 100

1254

063°

CATEGORY	A	B	C	D
S-ILS 6	1307-1/2		200 (200-1/2)	
S-LOC 6	1600-1/2	493 (500-1/2)	1600-1	493 (500-1)
CIRCLING	1600-1 444 (500-1)	1620-1 464 (500-1)	1740-1 1/2 584 (600-1 1/2)	2080-3 924 (1000-3)

NC-3, 03 OCT 2024 to 31 OCT 2024

NC-3, 03 OCT 2024 to 31 OCT 2024