

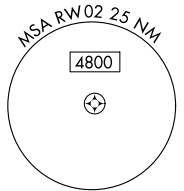
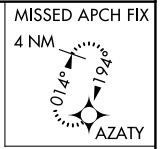
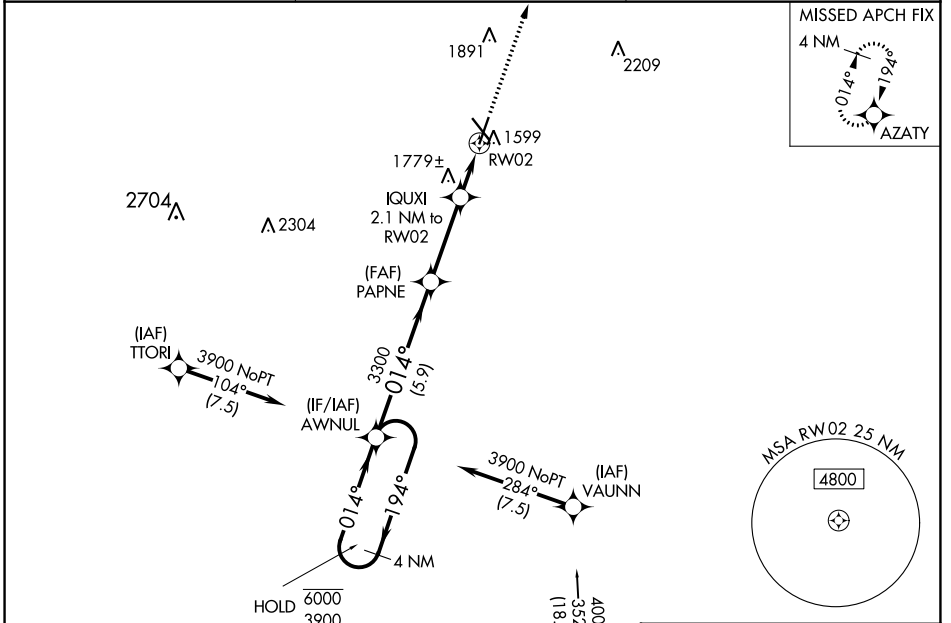
WAAS CH 50120 W02A	APP CRS 014°	Rwy Idg TDZE Apt Elev	5801 1573 1573
--	------------------------	-----------------------------	---

RNAV (GPS) RWY 2

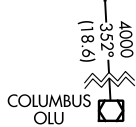
NORFOLK RGNL/KARL STEFAN MEML FLD (OFK)

RNP APCH.		MALSR	MISSED APPROACH: Climb to 3900 direct AZATY and hold.
<p>For uncorrected Baro-VNAV systems, LNAV/VNAV NA below -21°C or above 54°C.</p>			

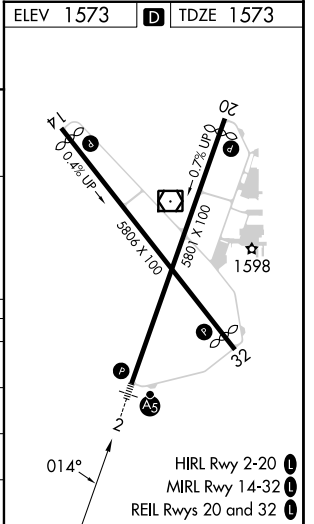
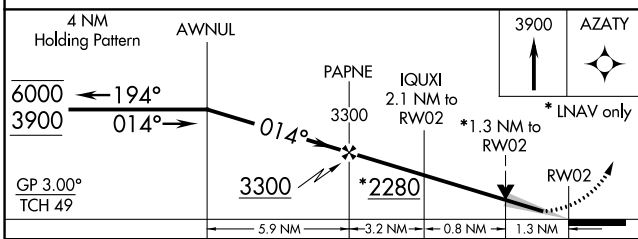
ASOS 119.025	MINNEAPOLIS CENTER 125.025 235.625	UNICOM 122.7 (CTAF)
------------------------	--	-------------------------------



Procedure NA for arrivals at OLU VORTAC on V71 southeast bound.



ELEV 1573	D TDZE 1573
-----------	--------------------



CATEGORY	A	B	C	D
LPV DA		1773-1/2	200 (200-1/2)	
LNAV/VNAV DA		2038-1	465 (500-1)	
LNAV MDA	2040-1/2	467 (500-1/2)	2040-1	467 (500-1)
C CIRCLING	2060-1 487 (500-1)	2100-1 527 (600-1)	2260-2 687 (700-2)	2360-2 1/2 787 (800-2 1/2)

NC-2, 31 OCT 2024 to 28 NOV 2024

NC-2, 31 OCT 2024 to 28 NOV 2024