

APP CRS	Rwy Idg	<b>4158</b>
<b>065°</b>	TDZE	<b>151</b>
	Apt Elev	<b>151</b>

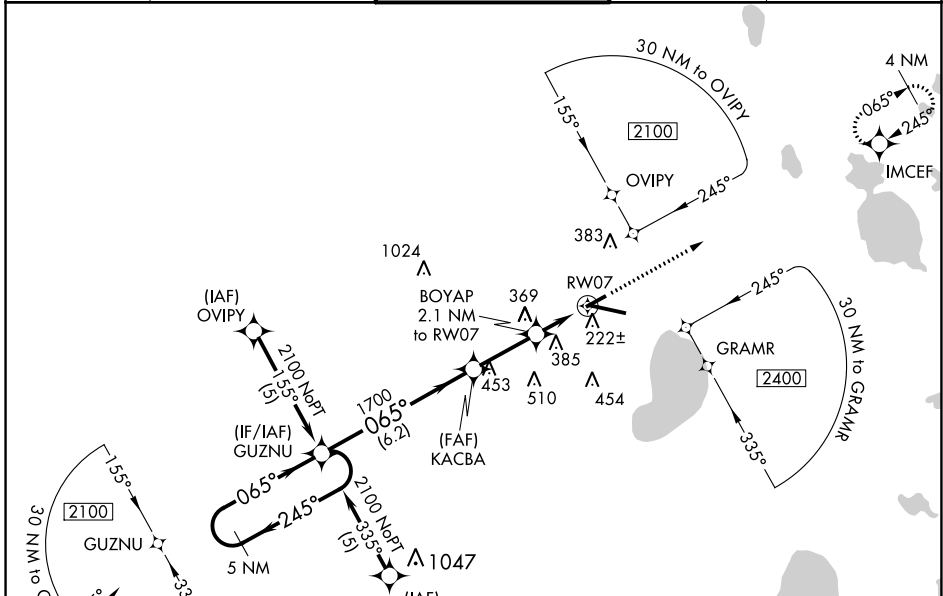
# RNAV (GPS) RWY 7

GAINESVILLE RGNL (G.N.V)

**⚠** DME/DME RNP-0.3 NA. Visibility reduction by helicopters NA. VDP NA when using Ocala Intl-Jim Taylor Fld altimeter setting. When local altimeter setting not received, use Ocala Intl-Jim Taylor Fld altimeter setting; increase all MDAs 100 feet and increase LNAV Cat C/D and Circling Cat C visibility ¼ SM and Circling Cat D ½ SM. When VGSI inoperative, Circling Rwy 25 NA at night.

MISSED APPROACH: Climb to 2000 direct IMCEF and hold.

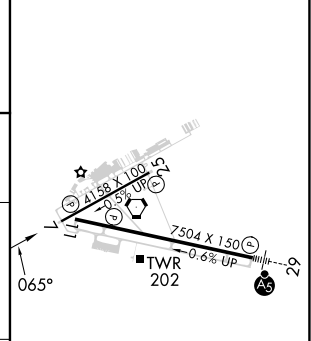
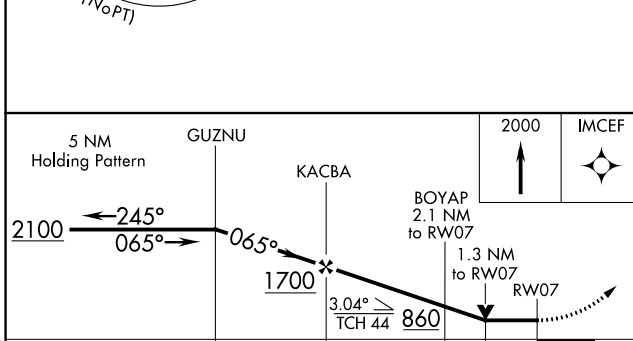
ATIS <b>127.15</b>	JACKSONVILLE APP CON <b>118.175 338.25</b>	GAINESVILLE TOWER★ <b>119.55 (CTAF) 0 353.7</b>	GND CON <b>121.7</b>	UNICOM <b>122.95</b>
-----------------------	---	--	-------------------------	-------------------------



SE-3, 08 AUG 2024 to 05 SEP 2024

SE-3, 08 AUG 2024 to 05 SEP 2024

ELEV 151	TDZE 151
----------	----------



CATEGORY	A	B	C	D
LNAV MDA	620-1 469 (500-1)	620-1 469 (500-1)	620-1½ 469 (500-1¼)	620-1½ 469 (500-1½)
CIRCLING	620-1 469 (500-1)	700-1 549 (600-1)	760-1¾ 609 (700-1¾)	820-2 669 (700-2)

REIL Rwy 11  
MIRL Rwy 7-25  
HIRL Rwy 11-29