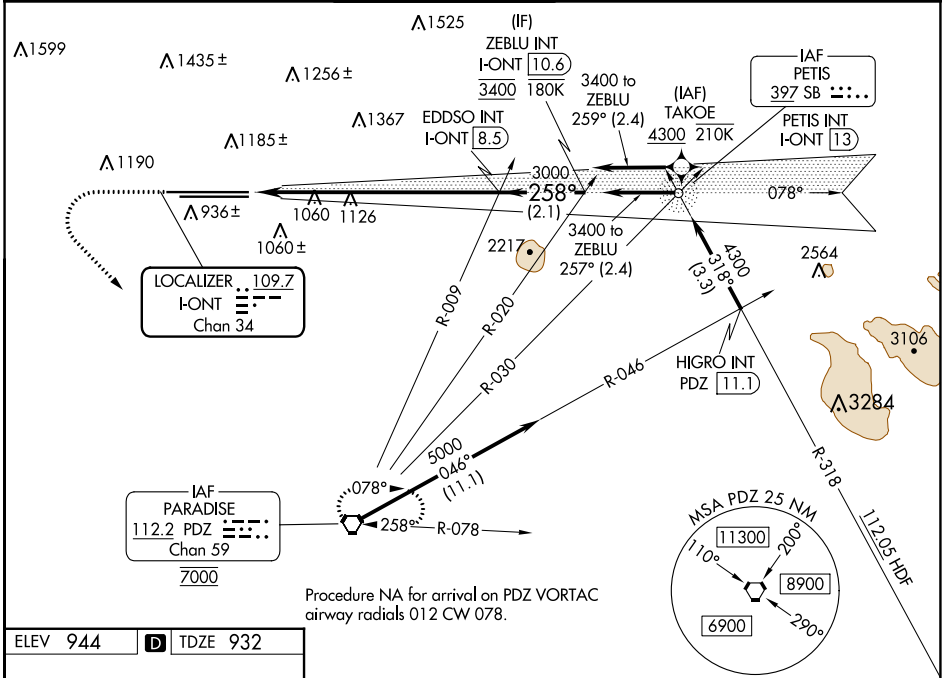


LOC/DME I-ONT <b>109.7</b> Chan <b>34</b>	APP CRS <b>258°</b>	Rwy Idg TDZE <b>932</b> Apt Elev <b>944</b>
---	------------------------	---

# ILS RWY 26R (CAT II & III)

ONTARIO INTL (ONT)

RNP APCH - GPS. From TAKOE.		ALSF-2	MISSED APPROACH: Climb to 2800 then climbing left turn to 5400 direct PDZ VORTAC and hold, continue climb-in-hold to 5400.		
D-ATIS <b>124.25</b>	SOCAL APP CON <b>127.0 318.2</b>	ONTARIO TOWER <b>120.6 360.775</b>	GND CON <b>121.9 257.8</b>	CLNC DEL <b>132.9</b>	CPDLC



SW-3, 08 AUG 2024 to 05 SEP 2024

SW-3, 08 AUG 2024 to 05 SEP 2024

ELEV 944	D	TDZE 932		
2800	5400	PDZ	VGSI and ILS glidepath not coincident (VGSI Angle 3.00/TCH 75).	
		ZEBLU INT I-ONT 10.6		
		3000		
		3400		
		GS 3.00° TCH 60		
CATEGORY	A	B	C	D
S-ILS 26R	CAT II RA 100/12 100 DA 1032			
S-ILS 26R	CAT III RVR 03			
<b>CATEGORY II &amp; III ILS - SPECIAL AIRCREW &amp; AIRCRAFT CERTIFICATION REQUIRED</b>				

TDZ/CL Rwy 8L, 26L and 26R  
 HIRL Rwy 8L-26R and 8R-26L

ONTARIO, CALIFORNIA  
 Amdt 6 10AUG23

34°03'N-117°36'W

## ONTARIO INTL (ONT) ILS RWY 26R (CAT II & III)